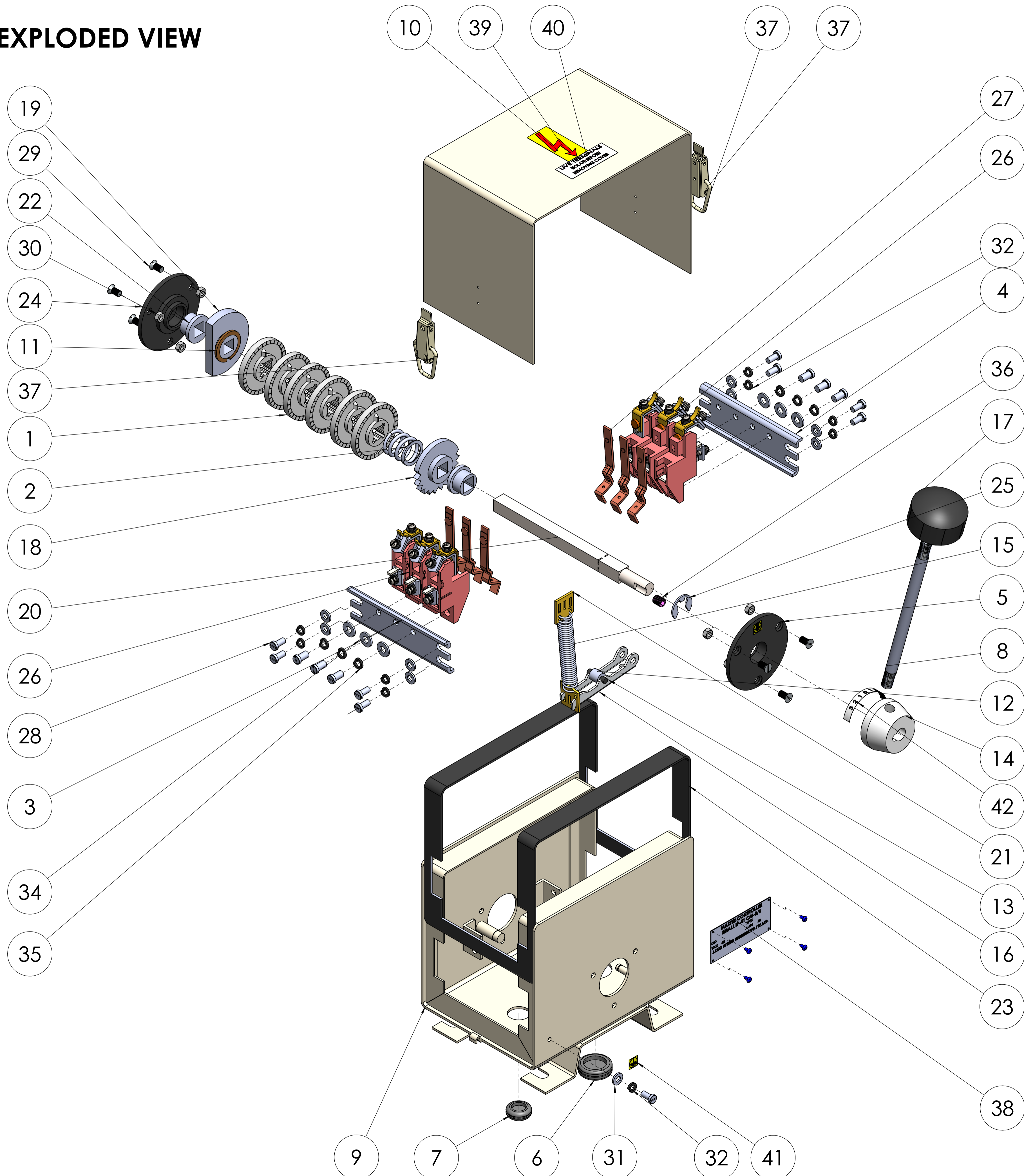


EXPLODED VIEW



| ITEM NO. | PART NAME | DESCRIPTION | Material | QTY. |
|----------|------------------------|--|--------------|------|
| 1 | CAM | SPARE CAM | NYLON | 6 |
| 2 | COMPRESSING SPRING 3-6 | SHAFT & CAM FIXING | SPRING STEEL | 1 |
| 3 | CONTACT STRIP | LEFT SIDE CONTACT FIXING STRIP 3 HOLES | M.S. | 1 |
| 4 | CONTACT STRIP | RIDE SIDE CONTACT FIXING STRIP 4 HOLES | M.S. | 1 |
| 5 | END BUSH | END BUSH OPEN | NYLON | 1 |
| 6 | GRUMET | GRUMET 1" | RUBBER | 1 |
| 7 | GRUMET 3-4 3-6 | GRUMET 3/4" | RUBBER | 1 |
| 8 | HANDLE ROD | MS HUB HANDLE ROD | MS | 1 |
| 9 | HOUSING | HOUSING IP-41 1/3 CM | SHEET METAL | 1 |
| 10 | TOP COVER | HOUSING TOP COVER IP-41 1/3 CM | SHEET METAL | 1 |
| 11 | LOCK WASHER | 12X12 SQ 29X1.5MM | M.S. | 1 |
| 12 | ROLLER | 10X5X10MM ROLLER | M.S. | 1 |
| 13 | PIN | 5X20 MM ROLLER PIN | M.S. | 1 |
| 14 | HUB | 12X45X25 MM MS HUB | M.S. | 1 |
| 15 | SPRING | NOTCHING SPRING | SPING STEEL | 1 |
| 16 | NOTCHING LEVER 3-6 | 80X15 MM | M.S. | 1 |
| 17 | KNOB | PLATIC KNOB | NYLON 6 | 1 |
| 18 | RATCHET WHEEL | PLASTIC RATCHET WHEEL 18" | M.S. | 1 |
| 19 | PLASTIC STOPER | 22X12X8MM | NYLON | 1 |
| 20 | SHAFT | 12X12X180 SQ | M.S. | 1 |
| 21 | SPRING HOLDER 3-6 | SPRING FITTING | M.S. | 2 |
| 22 | SQUARE BUSH 3-6 | 20X25X13MM , 12X12 MM SQ | NYLON 6 | 2 |
| 23 | GASKET PATTI | BODY FIXING | RUBBER | 1 |
| 24 | END BUSH CLOSED 3-6 | 20X25X 35X70 X4MM | NYLON | 1 |
| 25 | E TYPE CIRCLIP | E CIRCLIP 11.5 MM, GEAR SHAFT | M.S. | 1 |
| 26 | CONTACT BLOCK | CONTACT BLOCK ASSEMBLY IP-41 40AMP | - | 6 |
| 27 | CONTACT STRIP | CONTACT BREAK STRIP | BRASS | 6 |
| 28 | CSK SCREW 5X10 3-6 | CHEESED 5X10 | M.S. | 9 |
| 29 | SCREW CSK | END BUSH 5X10 CSK | M.S. | 6 |
| 30 | HEX NUT | M5 | M.S. | 6 |
| 31 | PLAIN WASHER | 11X5.5X1.5 | M.S. | 9 |
| 32 | SPRING WASHER | WASHER A5 | SPRING STEEL | 9 |
| 33 | CHEESED SCREW | CHEESED SCREW M6X10 | M.S. | 6 |
| 34 | PLAIN WASHER | 13X6.5X1.5 PLAIN WASHER M6 | M.S. | 6 |
| 35 | SPRING WASHER | WASHER A6 | SPRING STEEL | 6 |
| 36 | GRUB SCREW | 8X10 MM M8 THREAD | M.S. | 1 |
| 37 | LOCK | HOUSING LOCK | M.S. | 2 |
| 38 | NAME PLATE | 71X33X0.5 (4 HOLES 2MM) | ALUMINIUM | 1 |
| 39 | ARROW STICKER 3-6 | ARROW STICKER | - | 1 |
| 40 | TERMINAL STICKER 3-6 | TERMINAL STICKER | - | 1 |
| 41 | ERTHING STICKER 3-6 | ERTHING STICKER | - | 1 |
| 42 | STEP LONG STCIKER 3-6 | STEP LONG STICKER | - | 1 |
| 43 | STICKER 3-6 | DOWN ARROW STICKER | - | 1 |
| 44 | RIVET AB4 3-6 | NAME PLATE FIXING | ALUMINIUM | 4 |

COMPANY NAME: **ANAND SYSTEM ENGINEERING PVT LTD**

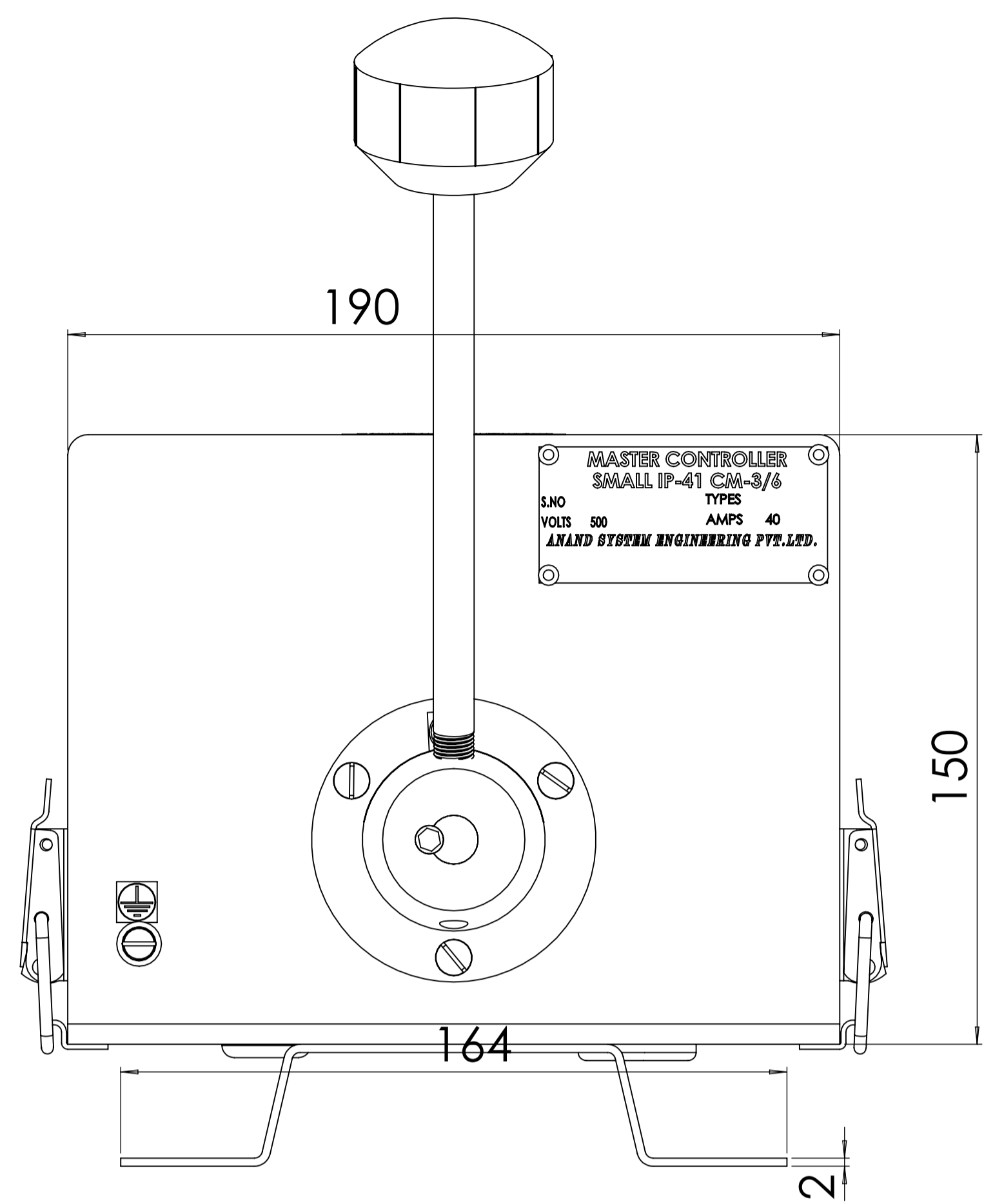
TITLE: **MASTER CONTROLLER SMALL IP-41 3-6 ASSEMBLY 2D**

Email id: info@anandcontrol.in

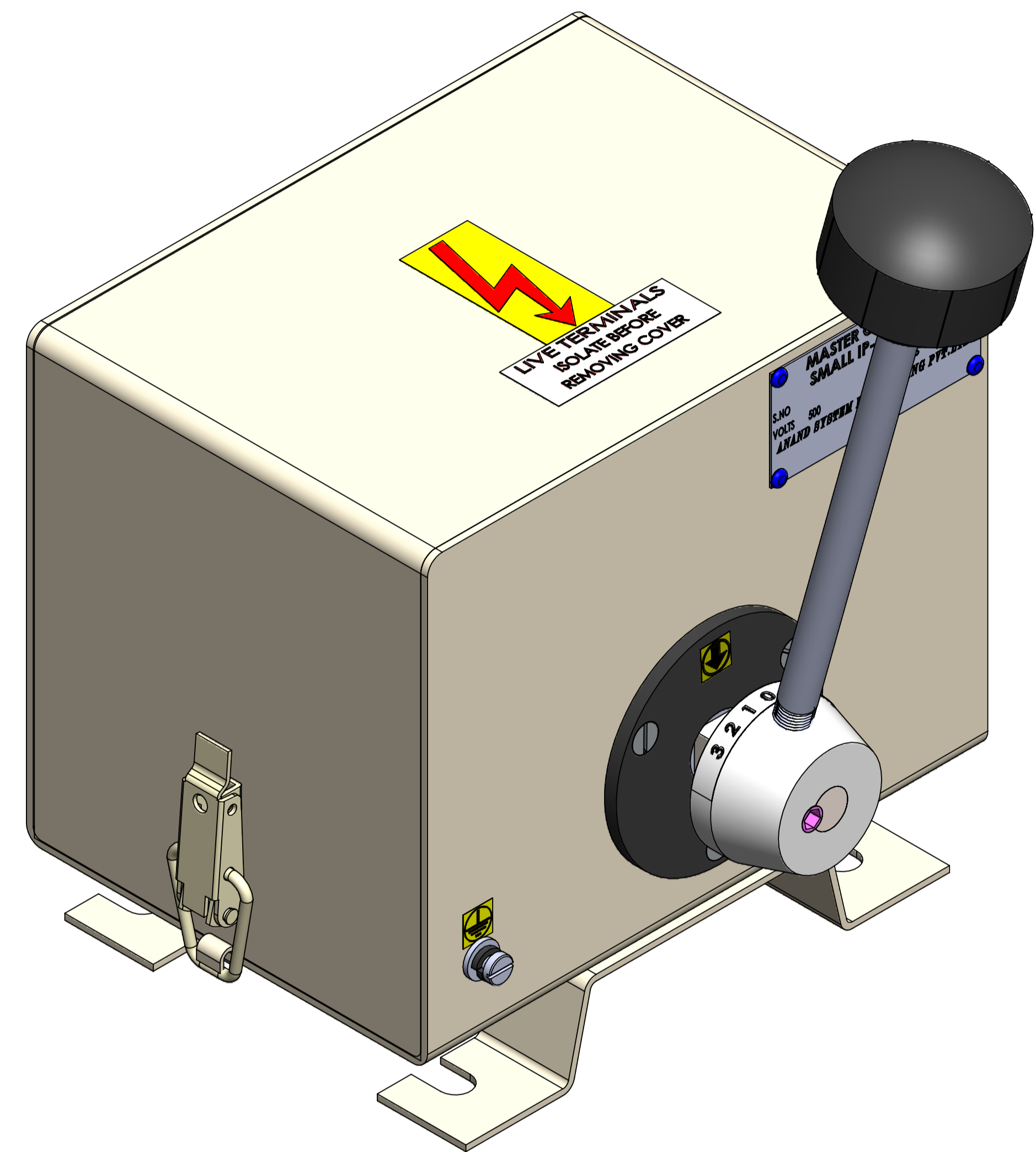
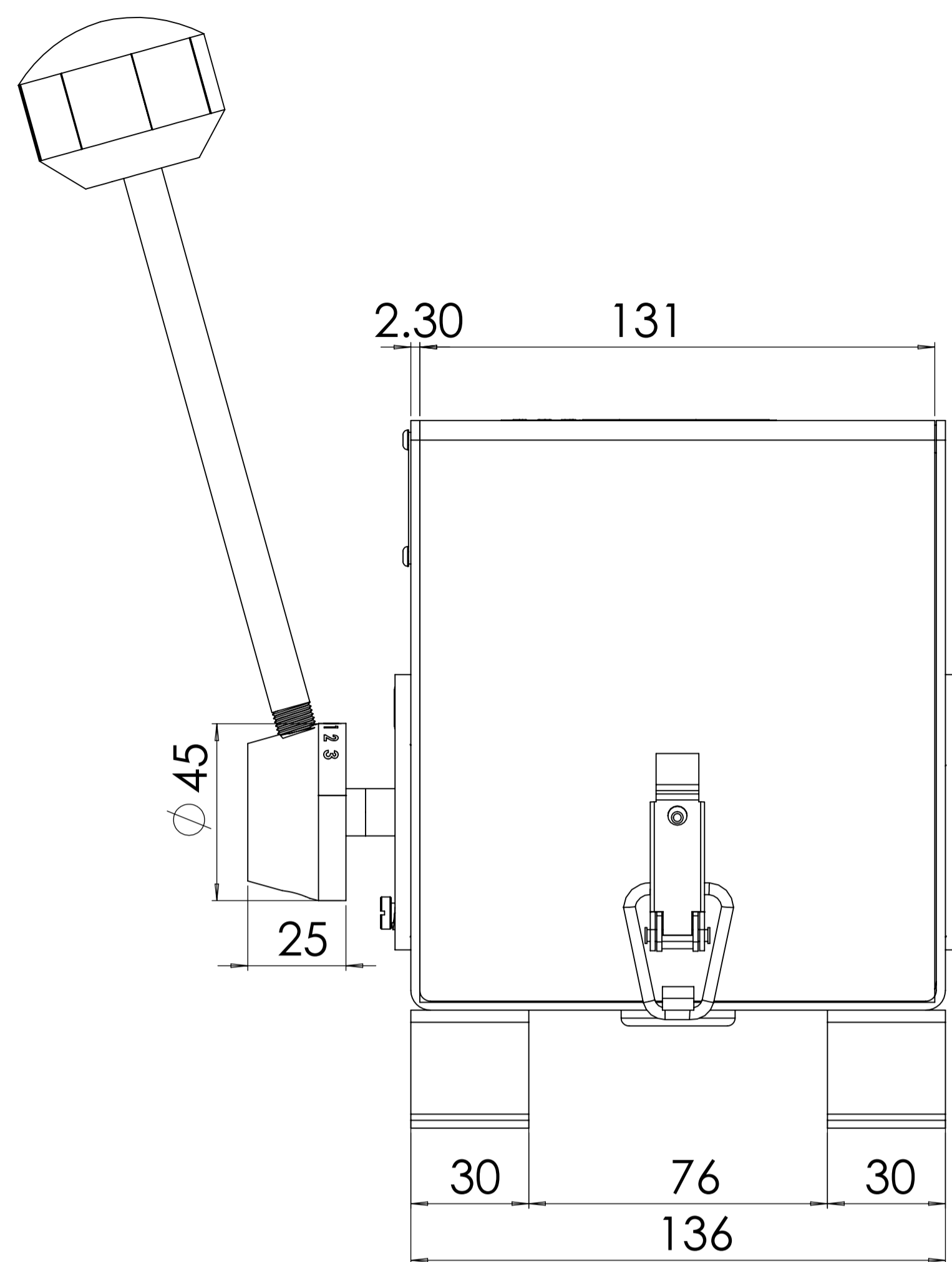
CONTACT NO: [9137620579](tel:9137620579)

SCALE: 1:2 SHEET 1 OF 2

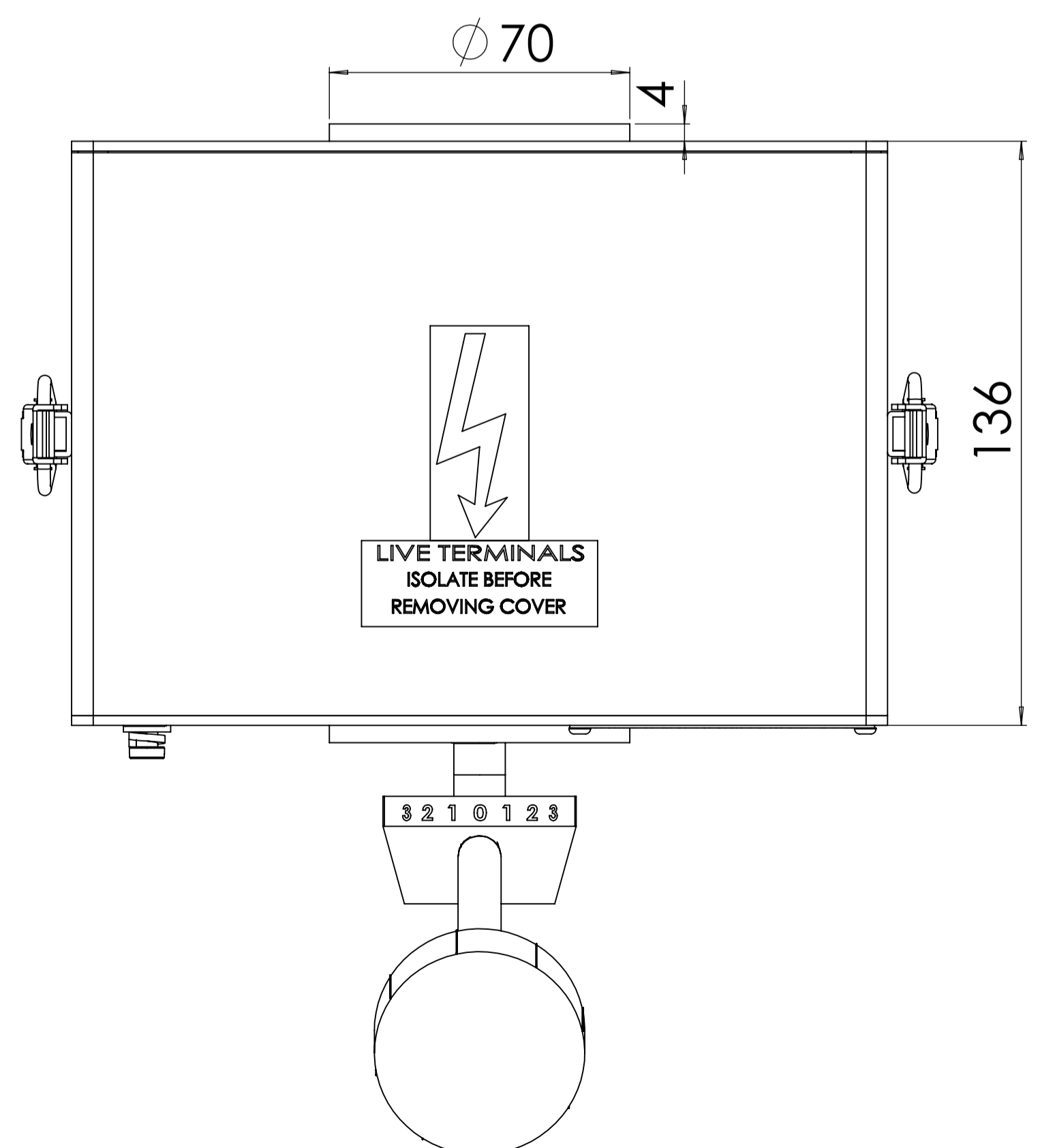
FRONT VIEW



SIDE VIEW

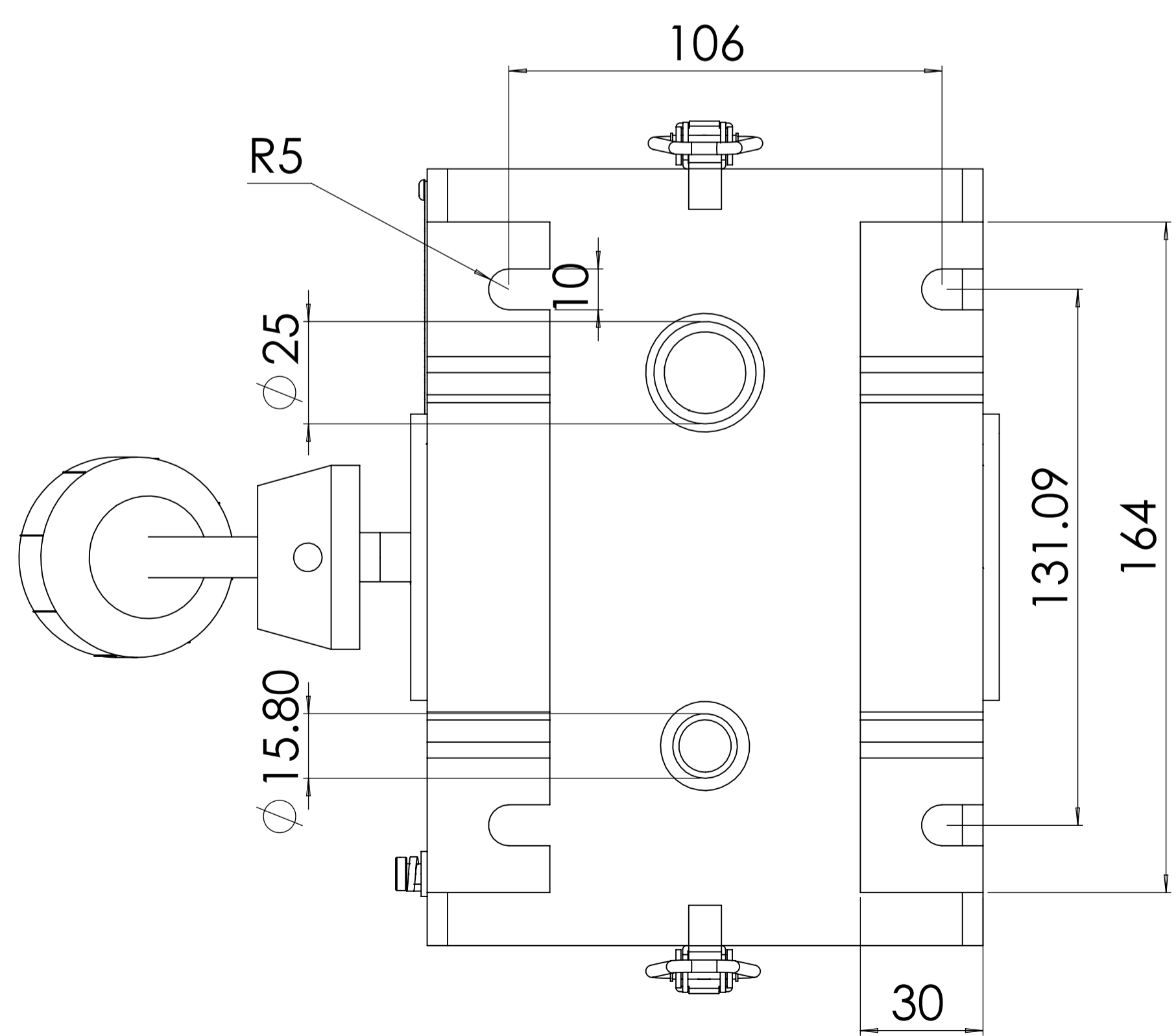


Ø 70



TOP VIEW

106



BOTTOM VIEW

COMPANY NAME:

ANAND SYSTEM ENGINEERING PVT LTD

Email id: info@anandcontrol.in
 CONTACT NO: [9137620579](tel:9137620579)

| | |
|--|--------------|
| DO NOT SCALE DRAWING | REVISION |
| TITLE: MASTER CONTROLLER SMALL IP-41 3-6 ASSEMBLY 2D | |
| DWG NO. | |
| DATE | SIGNATURE |
| SCALE: 1:2 | SHEET 2 OF 2 |

| | | | |
|-------|--|----------|--|
| DRAWN | | MATERIAL | |
| CHKD | | WEIGHT | |
| APPVD | | | |
| QA | | | |