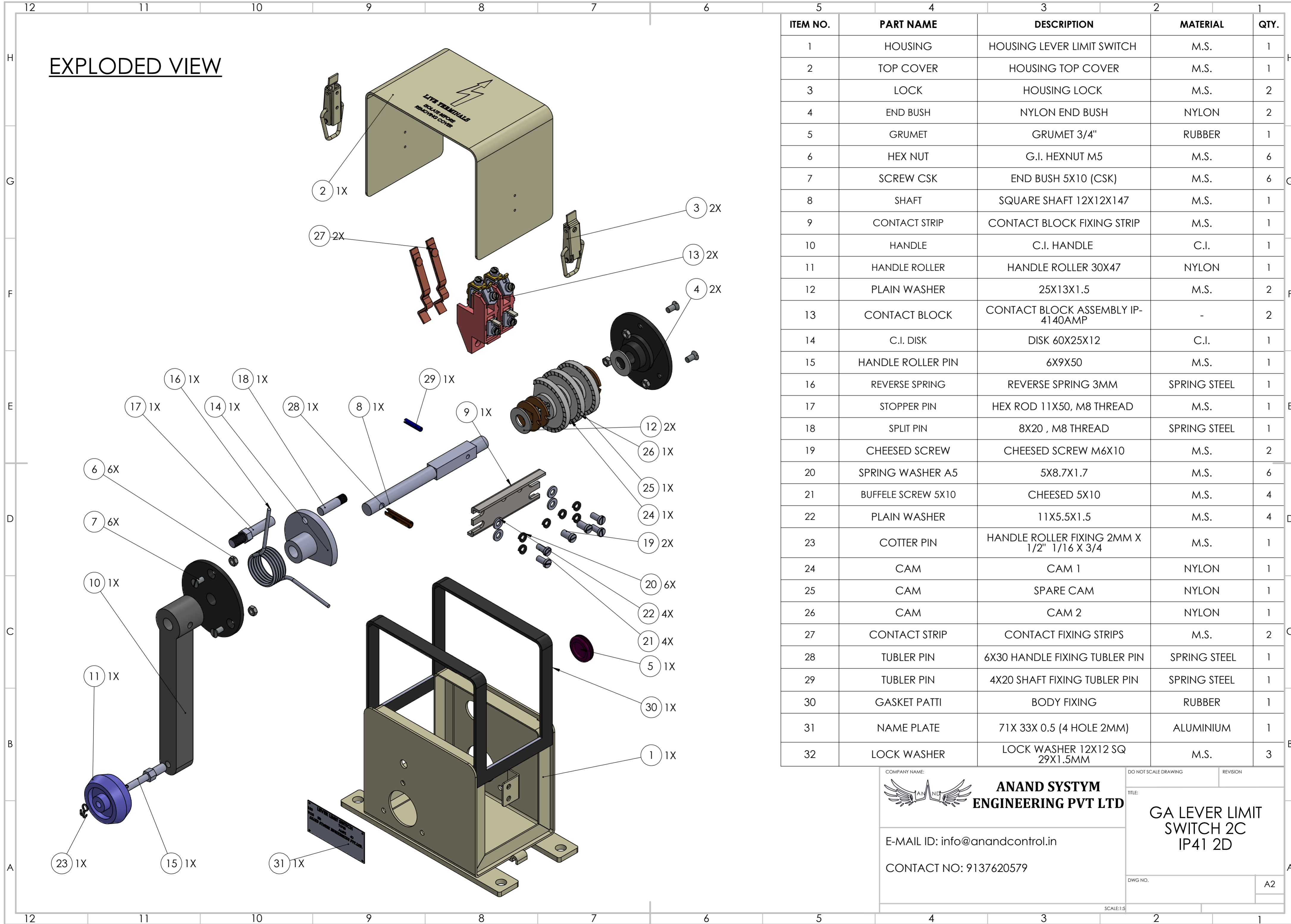


EXPLODED VIEW



ITEM NO.	PART NAME	DESCRIPTION	MATERIAL	QTY.
1	HOUSING	HOUSING LEVER LIMIT SWITCH	M.S.	1
2	TOP COVER	HOUSING TOP COVER	M.S.	1
3	LOCK	HOUSING LOCK	M.S.	2
4	END BUSH	NYLON END BUSH	NYLON	2
5	GRUMET	GRUMET 3/4"	RUBBER	1
6	HEX NUT	G.I. HEXNUT M5	M.S.	6
7	SCREW CSK	END BUSH 5X10 (CSK)	M.S.	6
8	SHAFT	SQUARE SHAFT 12X12X147	M.S.	1
9	CONTACT STRIP	CONTACT BLOCK FIXING STRIP	M.S.	1
10	HANDLE	C.I. HANDLE	C.I.	1
11	HANDLE ROLLER	HANDLE ROLLER 30X47	NYLON	1
12	PLAIN WASHER	25X13X1.5	M.S.	2
13	CONTACT BLOCK	CONTACT BLOCK ASSEMBLY IP-41 40AMP	-	2
14	C.I. DISK	DISK 60X25X12	C.I.	1
15	HANDLE ROLLER PIN	6X9X50	M.S.	1
16	REVERSE SPRING	REVERSE SPRING 3MM	SPRING STEEL	1
17	STOPPER PIN	HEX ROD 11X50, M8 THREAD	M.S.	1
18	SPLIT PIN	8X20, M8 THREAD	SPRING STEEL	1
19	CHEESED SCREW	CHEESED SCREW M6X10	M.S.	2
20	SPRING WASHER A5	5X8.7X1.7	M.S.	6
21	BUFFLE SCREW 5X10	CHEESED 5X10	M.S.	4
22	PLAIN WASHER	11X5.5X1.5	M.S.	4
23	COTTER PIN	HANDLE ROLLER FIXING 2MM X 1/2" 1/16 X 3/4	M.S.	1
24	CAM	CAM 1	NYLON	1
25	CAM	SPARE CAM	NYLON	1
26	CAM	CAM 2	NYLON	1
27	CONTACT STRIP	CONTACT FIXING STRIPS	M.S.	2
28	TUBLER PIN	6X30 HANDLE FIXING TUBLER PIN	SPRING STEEL	1
29	TUBLER PIN	4X20 SHAFT FIXING TUBLER PIN	SPRING STEEL	1
30	GASKET PATTI	BODY FIXING	RUBBER	1
31	NAME PLATE	71X 33X 0.5 (4 HOLE 2MM)	ALUMINIUM	1
32	LOCK WASHER	LOCK WASHER 12X12 SQ 29X1.5MM	M.S.	3

COMPANY NAME: **ANAND SYSTYM ENGINEERING PVT LTD**

E-MAIL ID: info@anandcontrol.in

CONTACT NO: 9137620579

DO NOT SCALE DRAWING

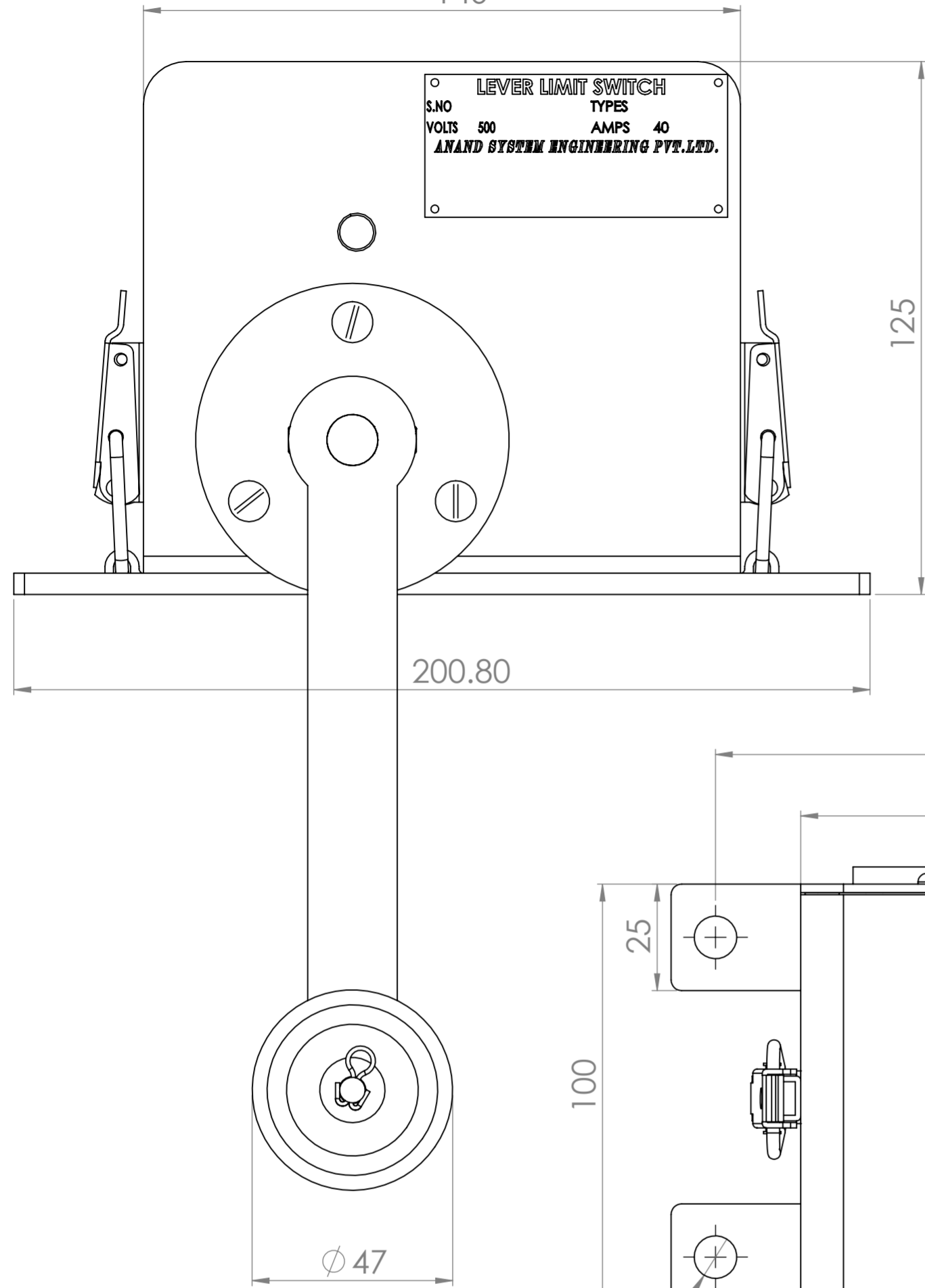
REVISION

TITLE: **GA LEVER LIMIT SWITCH 2C IP41 2D**

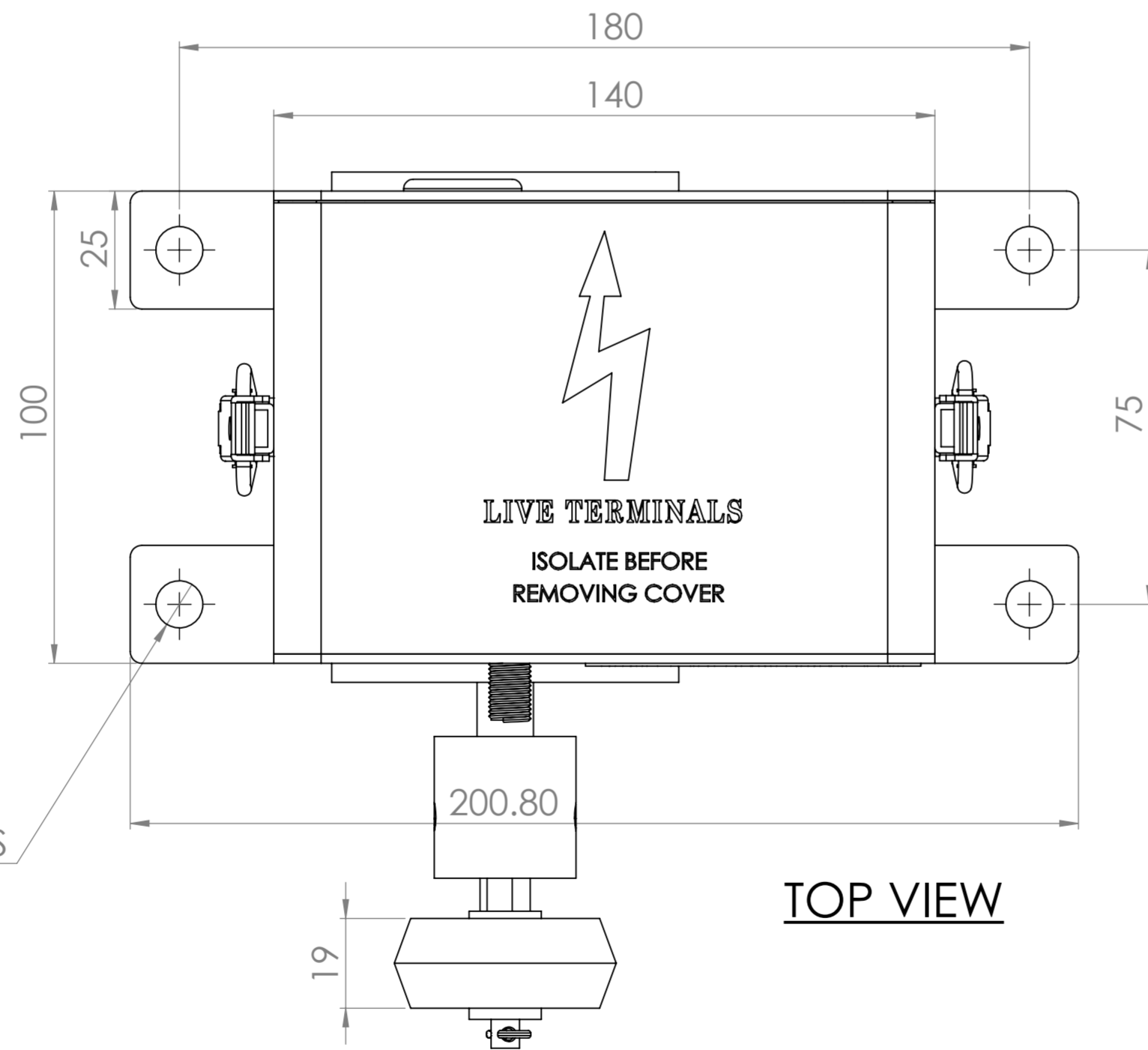
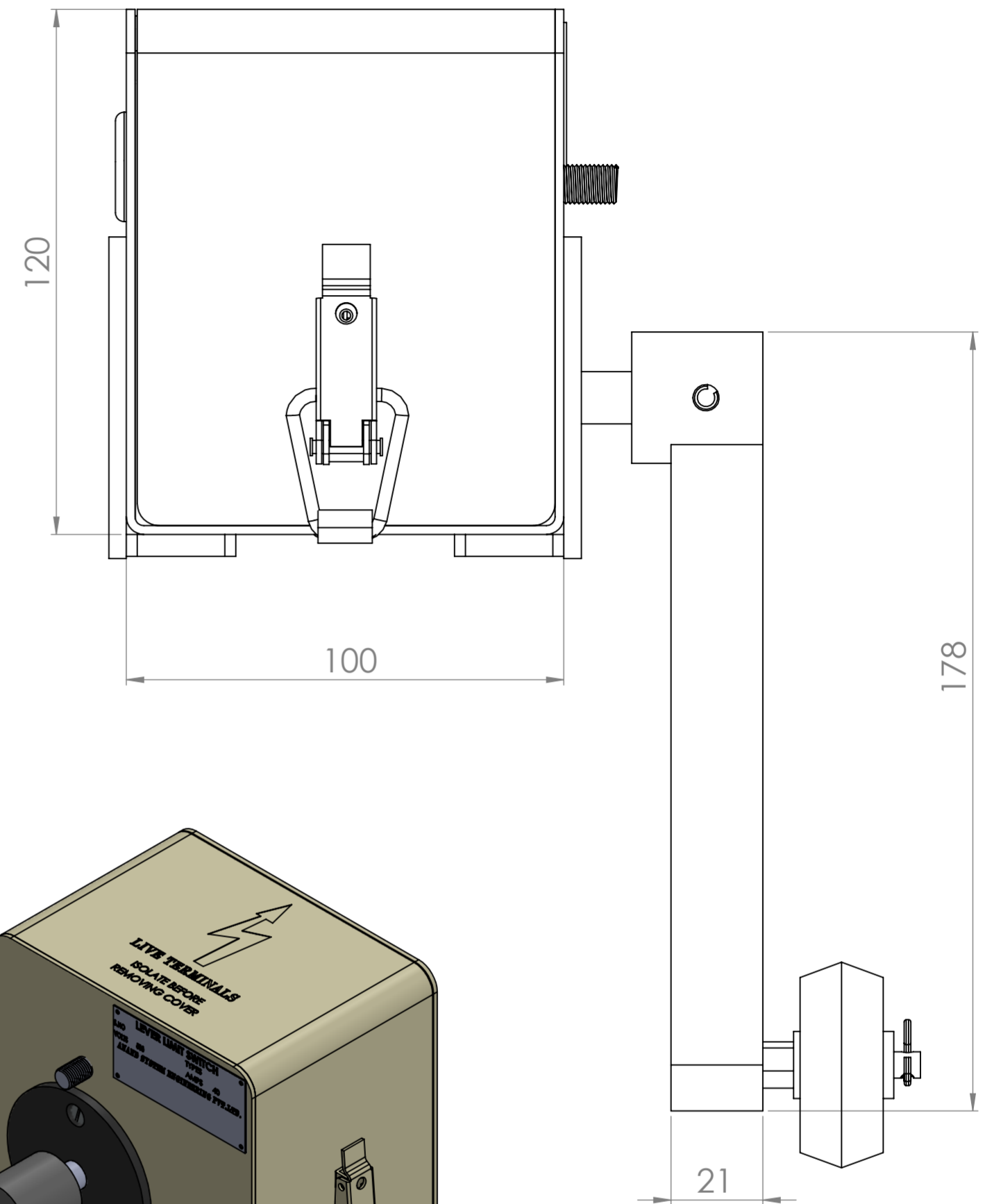
DWG NO. A2

SCALE: 1:5

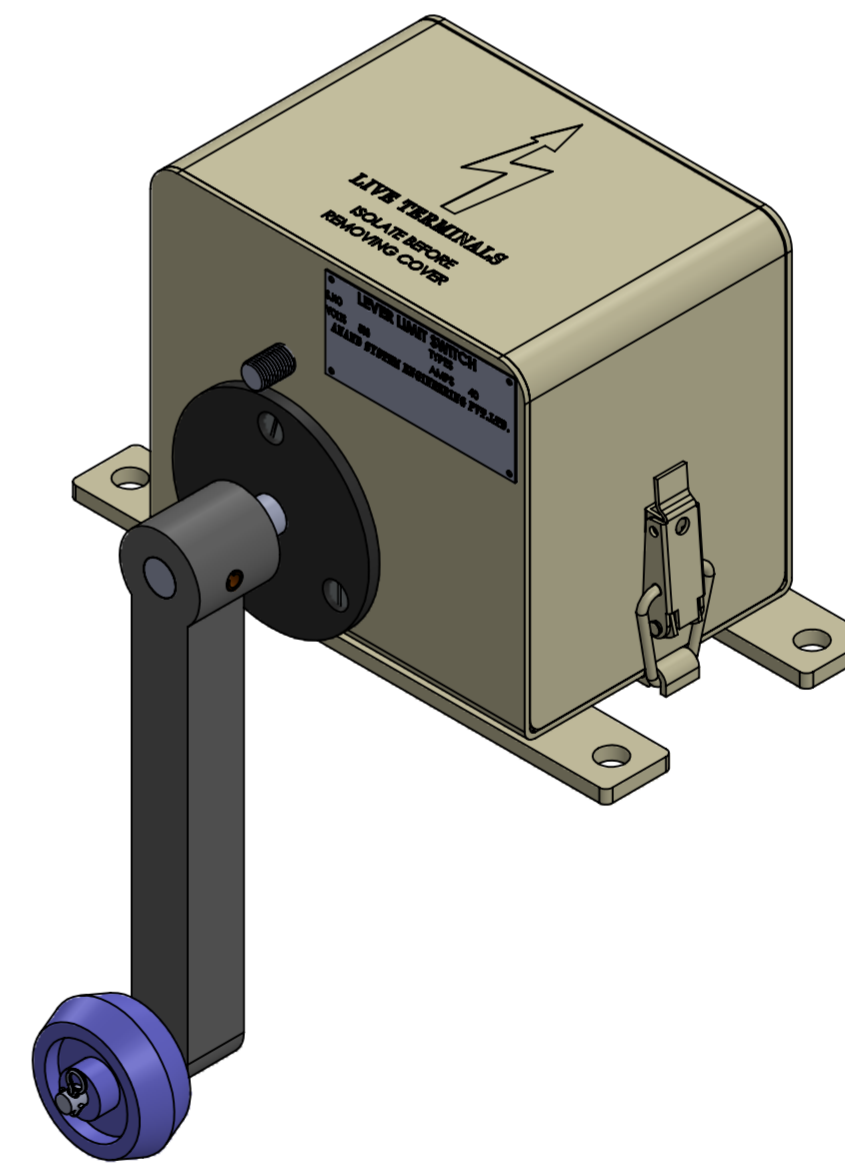
FRONT VIEW




SIDE VIEW



TOP VIEW



COMPANY NAME:	ANANDSYSTEM ENGINEERING PVT LTD	DO NOT SCALE DRAWING	REVISION
		TITLE: GA LEVER LIMIT SWITCH 2C IP41 2D	
Email id: info@anandcontrol.in		DWG. NO.	A2
CONTACT NO: 9137620579		SCALE:1:5 SHEET 2 OF 2	