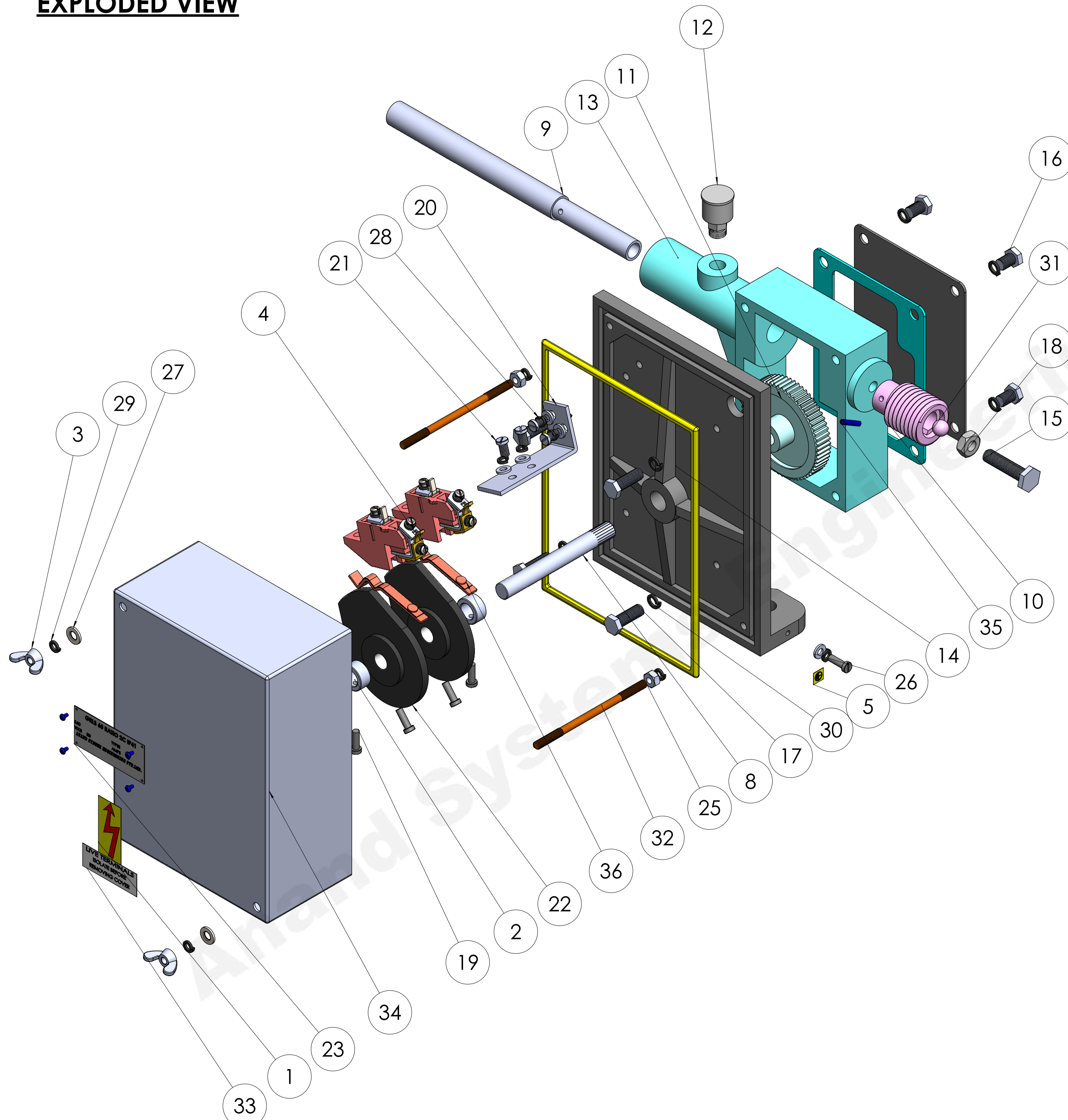


EXPLODED VIEW



ITEM NO.	PART NAME	DESCRIPTION	Material	QTY.
1	ARROW STICKER	ARROW STICKER	-	1
2	BUSH	19X10X1/2" CAM FIXING	M.S.	2
3	BUTTERFLY NUT	1/4 MM COVER FIXING	M.S.	2
4	CONTACT BLOCK	CONTACT BLOCK ASSEMBLY IP-4140AMP	-	2
5	ERTHING STICKER	ERTHING LEVEL	-	1
6	GASKET	MAIN BODY, 140X110X2	RUBBER	1
7	GEAR BOX COVER	140X110	M.S.	1
8	GEAR SHAFT	110X12.7	M.S.	1
9	GEAR WARM SHAFT	Ø 19X 245	M.S.	1
10	GEAR WARM SHAFT CAP	Ø 35 THREADING L- 49	PLASTIC	1
11	GEAR WORM WHEEL	RATIO 60:1, Ø 87	N6	1
12	GREASE CAP	Ø 22X18	PLASTIC	1
13	RLS BOTTOM GEAR BOX	138X112X42.8, Ø 40	CAST IRON	1
14	RLS BOTTOM MAIN BODY	223X170X70	CAST IRON	1
15	BOLT	10X40	M.S.	1
16	BOLT	8X12	M.S.	4
17	BOLT	8X25	M.S.	4
18	HEX NUT-M10	M 10 G.I.	M.S.	1
19	IMPELLER COVER AND TERMINAL SCREW	CHHS 5X15	M.S.	5
20	L- BRACKET	70X18.5X4 CONTACT ASSM FIXING	ALUMINIUM	1
21	SCREW	CHEESED M6X15	M.S.	4
22	MOLDED CAM	Ø 77	N6	2
23	NAME PLATE	72X34 (4 HOLES 2MM)	ALUMINIUM	1
24	NAME PLATE RIVET	AB4	ALUMINIUM	4
25	NUT 1-4	RB-1/4 NUT	M.S.	2
26	PLAIN WASHER	11X5.5X1.5	M.S.	5
27	PLAIN WASHER	13.5X6X1.5	M.S.	2
28	SPRING WASHER M5	M5X8.7X1.7	SPRING STEEL	4
29	SPRING WASHER	M6	SPRING STEEL	5
30	SPRING WASHER	M8	SPRING STEEL	8
31	STEEL BALL	Ø 12	STEEL	1
32	STUD	1/4"X110 MM	M.S.	2
33	TERMINAL STICKER	TERMINAL STICKER	PVC	1
34	TOP COVER	217X157X86	M.S.	1
35	TUBLER PIN	4X20 SHAFT FIXING TUBLER PIN	SPRING STEEL	1
36	CONTACT STRIP	CONTACT FIXING STRIPS	M.S.	2
37	ROUND GASKET GEAR BOX	5MM	RUBBER	1

COMPANY NAME: **ANAND SYSTEM ENGINEERING PVT LTD**

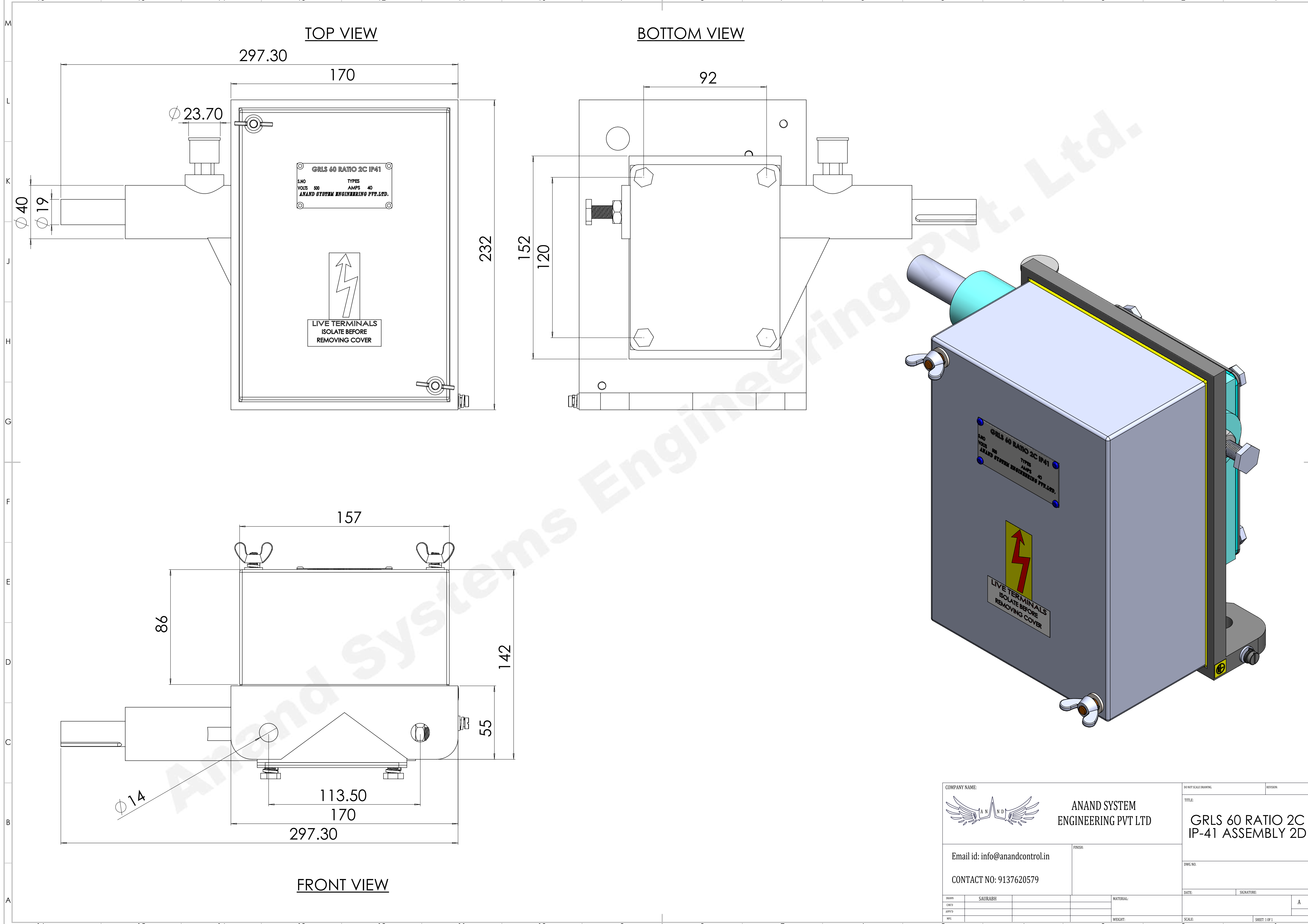
EMAIL ID: info@anandcontrol.in

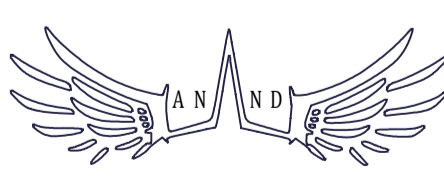
CONTACT NO: 9137620579

TITLE: **GRLS 60 RATIO 2C IP-41 ASSEMBLY 2D**

SCALE: 1:1

SHEET: 1 OF 1



COMPANY NAME:		ANAND SYSTEM ENGINEERING PVT LTD		DO NOT SCALE DRAWING	REVISION:
		Email id: info@anandcontrol.in CONTACT NO: 9137620579		TITLE: GRLS 60 RATIO 2C IP-41 ASSEMBLY 2D	
DATE:	SIGNATURE:	SCALE:		SHEET: 1 OF 1	
DRWN: SAURABH	CHECK:	APPR:	MATERIAL:	A	
DATE:	SIGNATURE:	SCALE:	WEIGHT:	A	