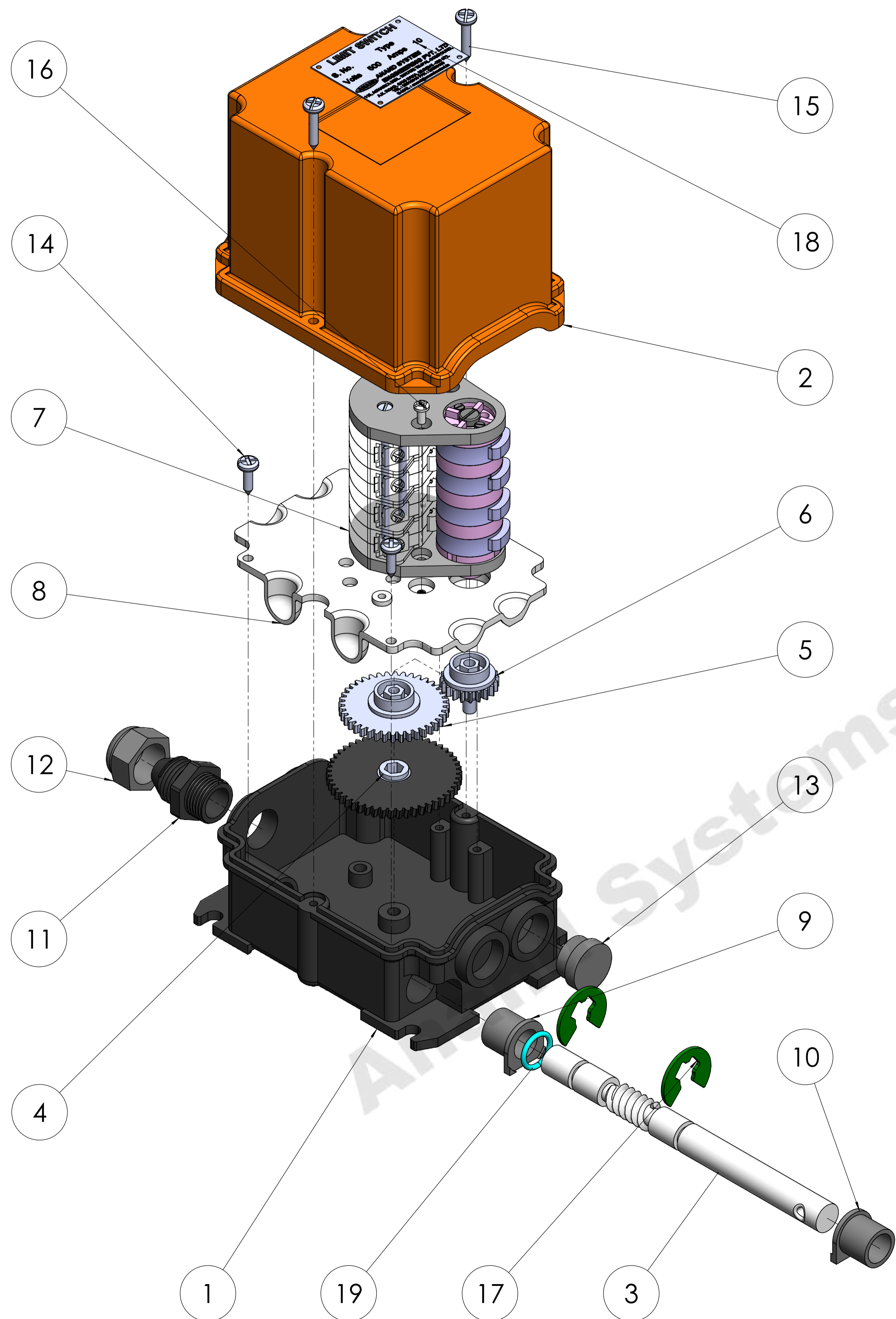
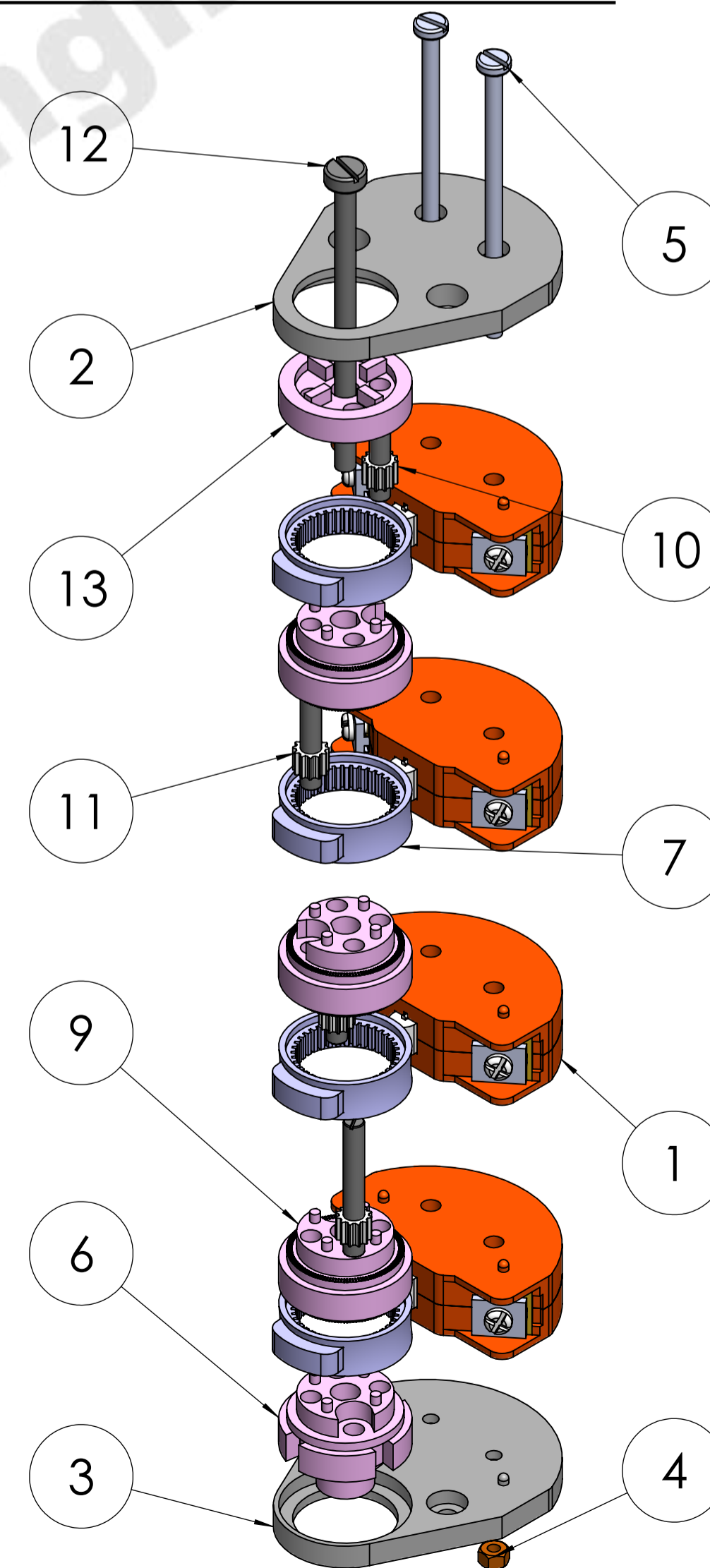


# EXPLODED VIEW

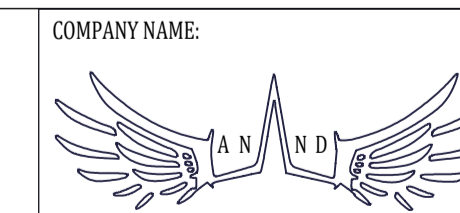


ITEM NO.	PART NUMBER	DESCRIPTION	Material	QTY.
1	BOTTOM COVER	126X91X45	THERMO PLASTIC	1
2	TOP COVER	122X92X50	THERMO PLASTIC	1
3	WORM SHAFT	143X Ø 12,DOUBLE THREAD 3 TURNS	M.S.	1
4	GEARS WARM WHEEL	Ø 51, 50 TEETH	THERMO PLASTIC	1
5	GEARS WARM WHEEL	Ø 41.5, 40TEETH	THERMO PLASTIC	1
6	FG TOP GEAR	Ø 22, 12TEETH	THERMO PLASTIC	1
7	FG CONTACT BLOCK ASSEMBLY (FG 12.5 P4)	47X30X7	THERMO PLASTIC	1
8	FG ASSEMBLY PLATE	109X82X3	THERMO PLASTIC	1
9	GEAR SHAFT BUSH CLOSE	15.5X Ø 16	THERMO PLASTIC	1
10	GEAR SHAFT BUSH OPEN	15X Ø 16	THERMO PLASTIC	1
11	CABLE GLAND	Ø 16.5X30	THERMO PLASTIC	1
12	CABLE GLAND NUT	HEX-21X15	THERMO PLASTIC	1
13	GRUMET CAP	Ø 20X 11	THERMO PLASTIC	1
14	SCREW	SELF THREADED 8X13	M.S.	4
15	SCREW	SELF THREADED 8X19	M.S.	2
16	STAR SCREW	M4X6.5	M.S.	2
17	E CIRCLIP 8mm	8X25	SPRING STEEL	2
18	NAME PLATE	47X37	ALUMINIUM	1
19	O RING	Ø 12mm	RUBBER	1

# CONTACT BLOCK ASSEMBLY



ITEM NO.	PART NUMBER	DESCRIPTION	Material	QTY.
1	CONTACT BLOCK ASSEMBLY	P4	THERMO PLASTIC	4
2	TOP GUIDE CAM PLATE	47X60X5	THERMO PLASTIC	1
3	BASE GUIDE CAM PLATE	47X60X5	THERMO PLASTIC	1
4	M3 NUT	Ø 3 mm	M.S.	2
5	M3 SCREW	3X35	M.S.	2
6	BASE CAM SET ASSEMBLY	Ø 25X20.5X ID-Ø 7	THERMO PLASTIC	1
7	GEAR RING CAM SET	Ø 25X Ø 19X8	THERMO PLASTIC	4
8	M4 NUT	Ø 4mm	M.S.	1
9	MIDDLE BASE CAM SET ASSEMBLY	Ø 25X15	THERMO PLASTIC	3
10	S.S.PIN	4X16	M.S.	2
11	S.S.PIN	4X30	M.S.	2
12	SCREW CHZ	4X40	M.S.	1
13	TOP CAM SET ASSEMBLY	Ø 25X7.5	THERMO PLASTIC	1



ANAND SYSTEM ENGINEERING PVT LTD

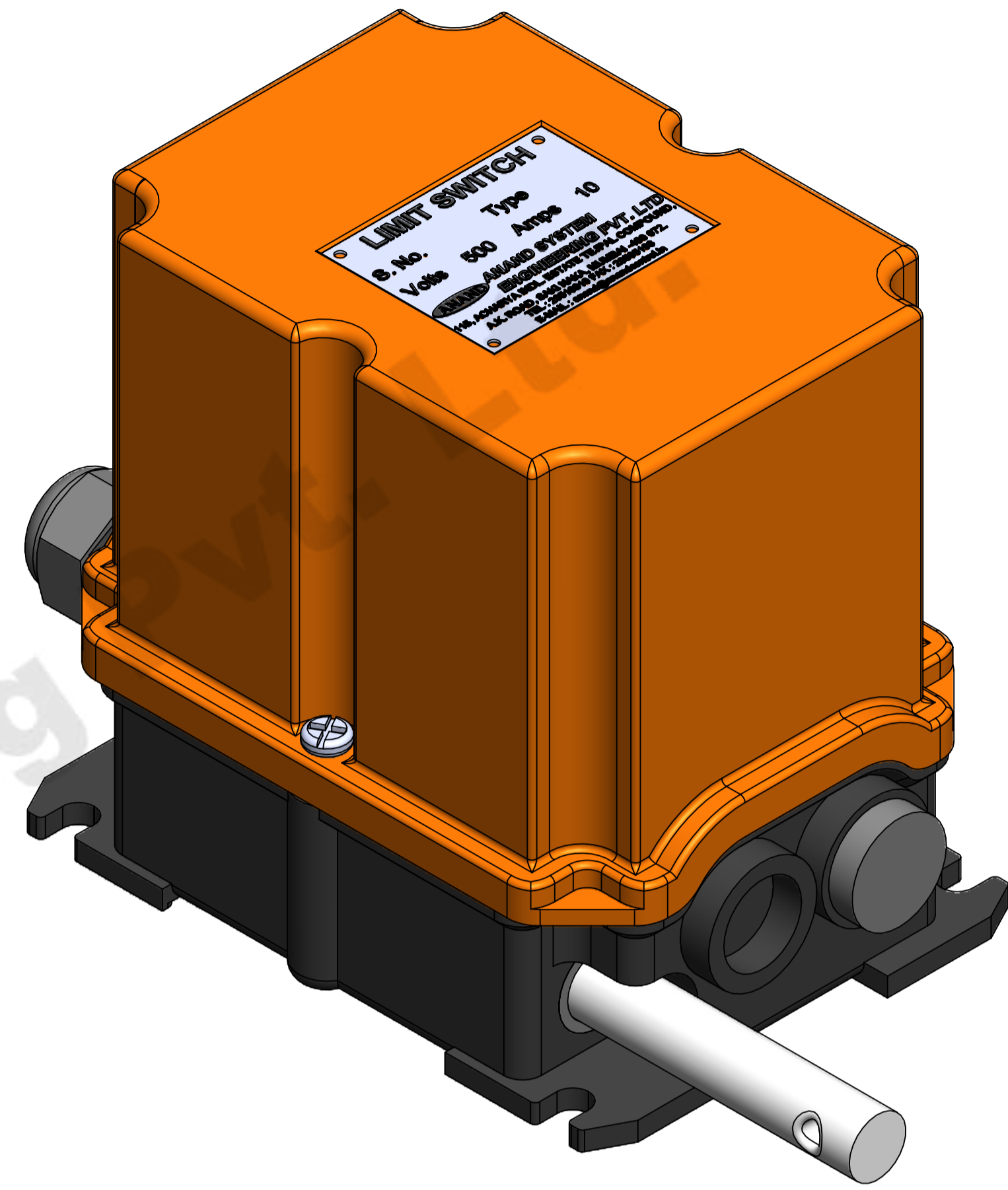
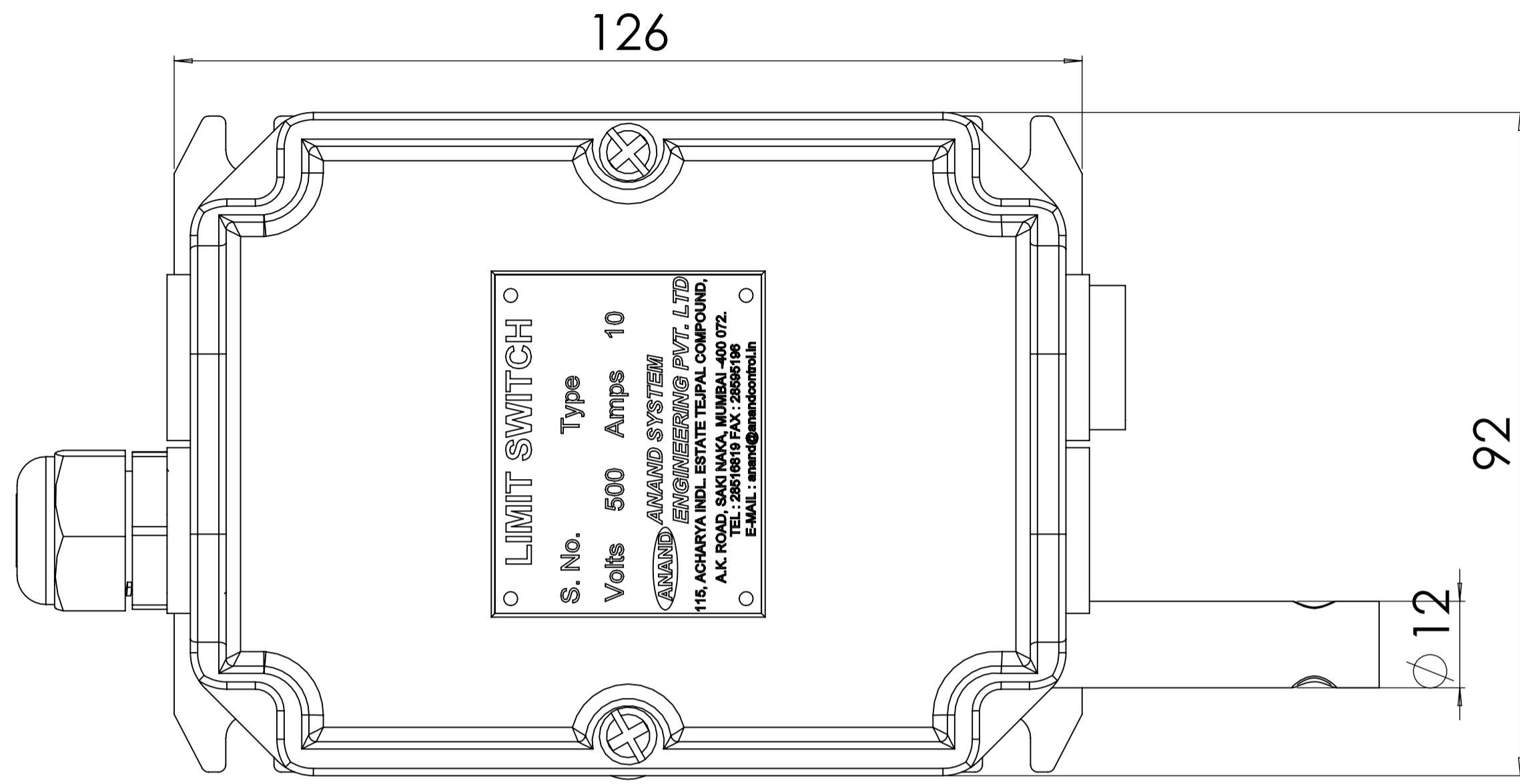
Email id: info@anandcontrol.in

CONTACT NO: 9137620579

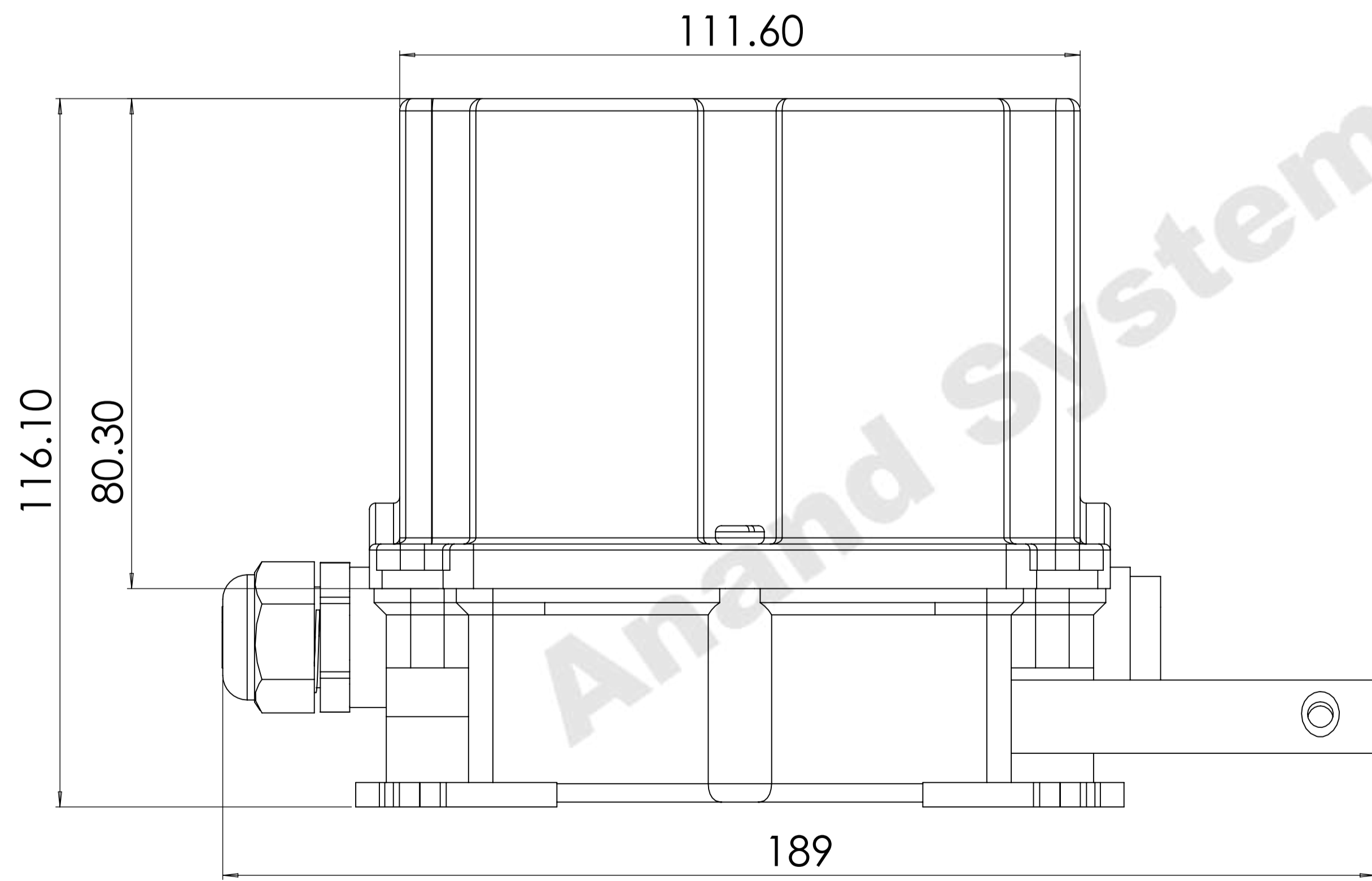
TITLE: FG 12.5 P4 ASEMBLY 2D

DATE: 27-11-2024	SIGNATURE:
SCALE:	SHEET: 1 OF 1

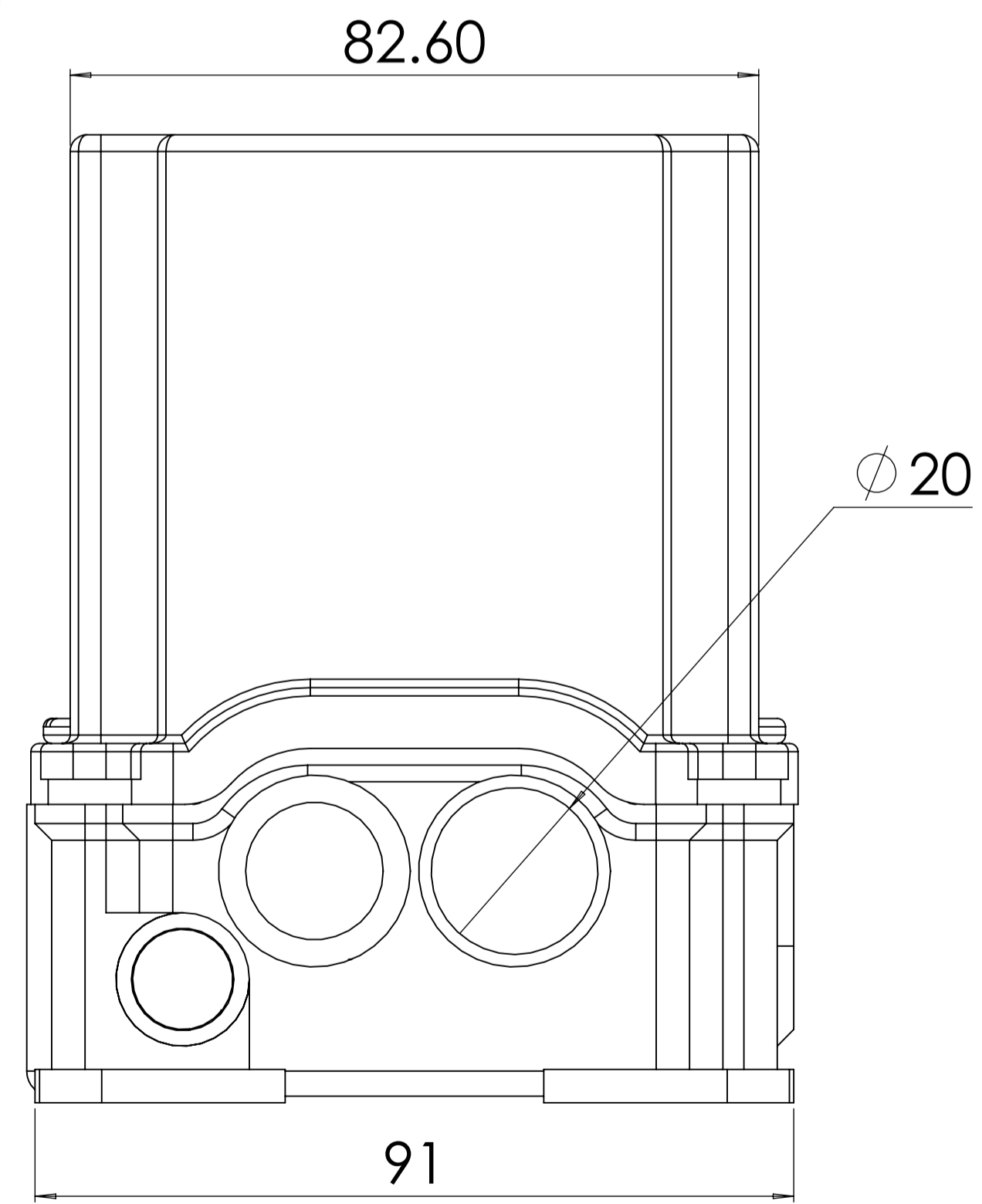
TOP VIEW

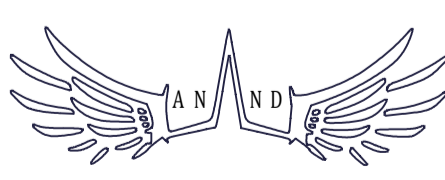


FRONT VIEW



SIDE VIEW



COMPANY NAME:  <b>ANAND SYSTEM ENGINEERING PVT LTD</b>		TITLE: <b>FG 12.5 P4 ASEMBLY 2D</b>
Email id: info@anandcontrol.in CONTACT NO: 9137620579		DATE: 27-11-2024 SIGNATURE:
DRAWN: SAURABH CHECKED: APPROVED: MFC:	MATERIAL: FINISH: WEIGHT:	SHEET: 1 OF 1