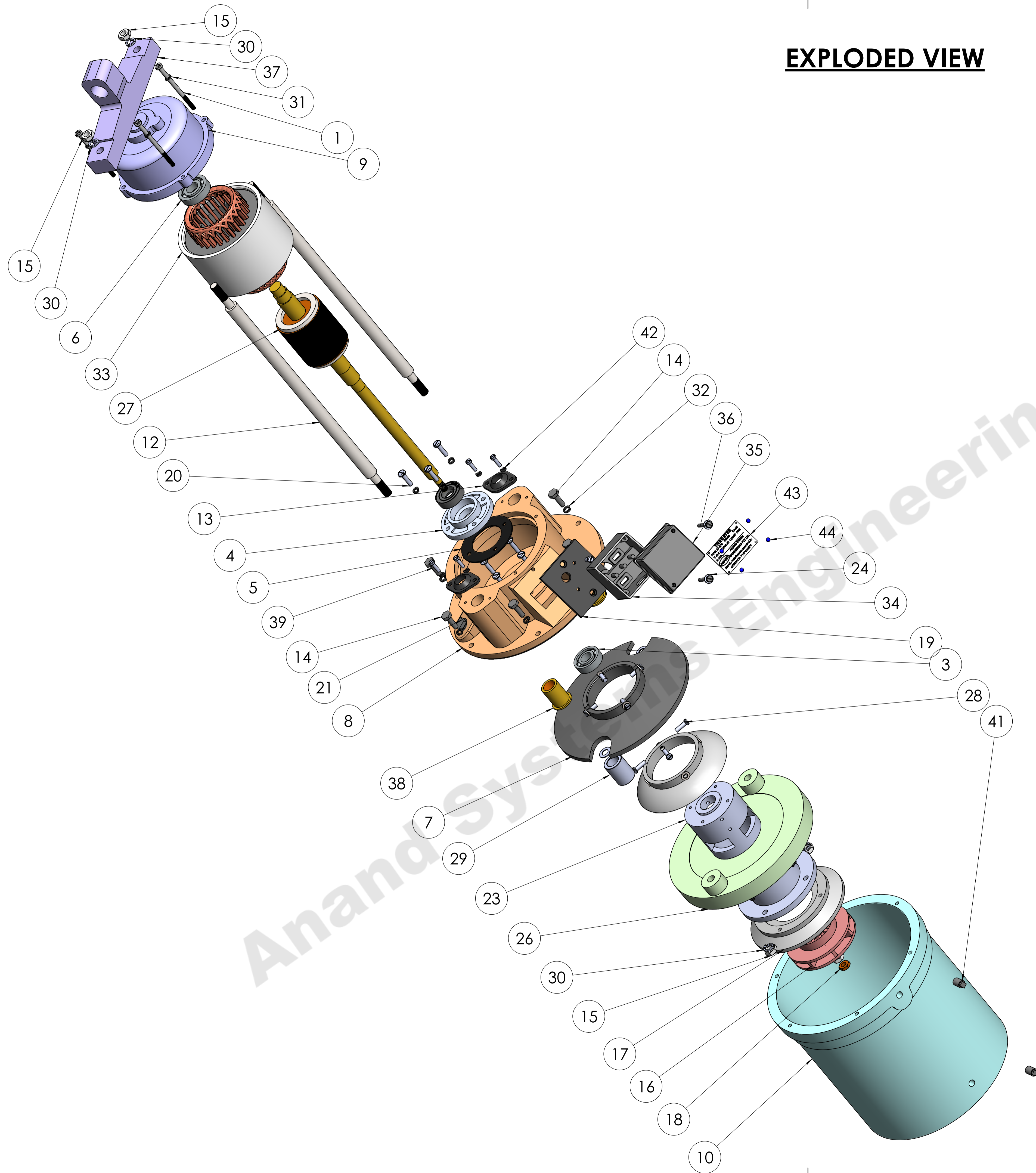


EXPLODED VIEW



ITEM NO.	PART NAME	DESCRIPTION	MATERIAL	QTY.
1	MOTOR BOTTOM HOUSING COVER BOLT	5X80 ALENKEY BOLT	M.S.	4
2	BAFFELE SMALL	128X70	ALUMINIUM	1
3	BEARING	6202ZZ 15X35	CARBAN CHROME STEEL	1
4	BEARING CAP	70X20	ALUMINIUM	1
5	BEARING CAP GASKET	72X42X1.5,4 HOLES ϕ 5, PCD 56	RUBBER	1
6	BEARING	RLS5ZZ, 16X40	CARBAN CHROME STEEL	1
7	BUFFELE BIG	189X70	ALUMINIUM	1
8	C.I. END COVER	218X119X80	CAST IRON	1
9	C.I. END SHIELD	128X119X75	ALUMINIUM	1
10	C.I. TANK	218X192X213	CAST IRON	1
11	END COVER GASKET	216X190, 6 HOLES	RUBBER	1
12	GUIDE ROD	16X405	N8	2
13	GUIDE ROD SEAL	ID-16, 2HOLE ϕ 5	M.S.	2
14	HEX BOLT	6X20, END COVER FIXING	ALUMINIUM	6
15	HEX NUT	M8	M.S.	5
16	IMPELLER	88X45	PLASTIC	1
17	IMPELLER GUIDE COVER	131X57X20	ALUMINIUM	1
18	LOCK NUT	5/16", ID 7MM	M.S.	1
19	MS PLATE TERMINAL BOX FIXING	65X70X6	M.S.	1
20	BAFFELE COVER SCREW	5X15	M.S.	12
21	OIL PLUG 3-8 BSP	16.5X13	M.S.	1
22	OIL SEAL	19X35X10	RUBBER	1
23	OIL TUBE	108X70X170	CAST IRON	1
24	PLAIN WASHER	11X5.5X1.5	M.S.	2
25	PLAIN WASHER	16X8.5X1	M.S.	2
26	PLUNGER	70.5X149.5	CAST IRON	1
27	ROTOR	62.3X H-394	ALUMINIUM	1
28	BAFFELE COVER SCREW	5X15	M.S.	12
29	SPACER FOR GUIDEROD	25X16X32	M.S.	2
30	SPRING WASHER	3/8	SPRING STEEL	4
31	SPRING WASHER	A5	SPRING STEEL	12
32	SPRING WASHER	A6	SPRING STEEL	6
33	STATOR	119X75	ALUMINIUM, LAMINATED STEEL	1
34	TERMINAL BOX	78X78	THERMO PLASTIC	1
35	TERMINAL BOX COVER	78X78	THERMO PLASTIC	1
36	TERMINAL BOX COVER FIXING SCREW	CHZ 4X40	M.S.	2
37	THRUST BAR	192X21	CAST IRON	1
38	GUIDE ROD SEAL	ID-16, 5/8	M.S.	2
39	SCREW GUIDE RODSEAL	CSK 4X16	M.S.	4
40	PLAIN WASHER	11X5X1.5	M.S.	8
41	OIL PLUG 1-8 BSP 68KG	9.5X12	M.S.	2
42	SPRING WASHER	A4	SPRING STEEL	4
43	NAME PLATE 68KG	61X43	ALUMINIUM	1
44	NAME PLATE RIVET AB4	L-4.5 MM	ALUMINIUM	4
45	CABLE LUG	1.5 MM	M.S.	3
46	HEX NUT	M5	M.S.	4

COMPANY NAME: **ANAND SYSTEM ENGINEERING PVT LTD**

DO NOT SCALE DRAWING

REVISION

TITLE: **68 KG THRUSTER ASSEMBLY 2D**

Email id: info@anandcontrol.in

CONTACT NO: **9137620579**

DWG HO.

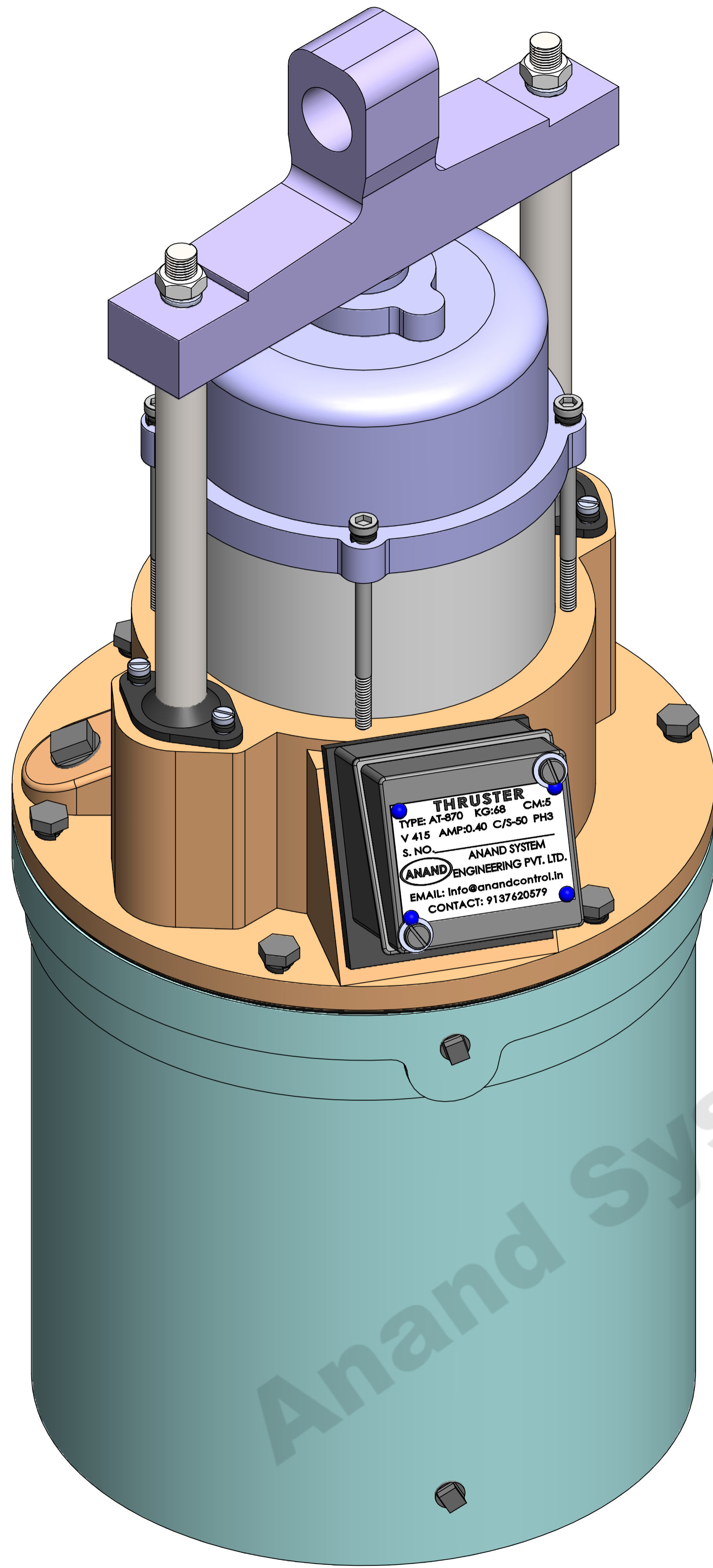
DATE

SIGNATURE

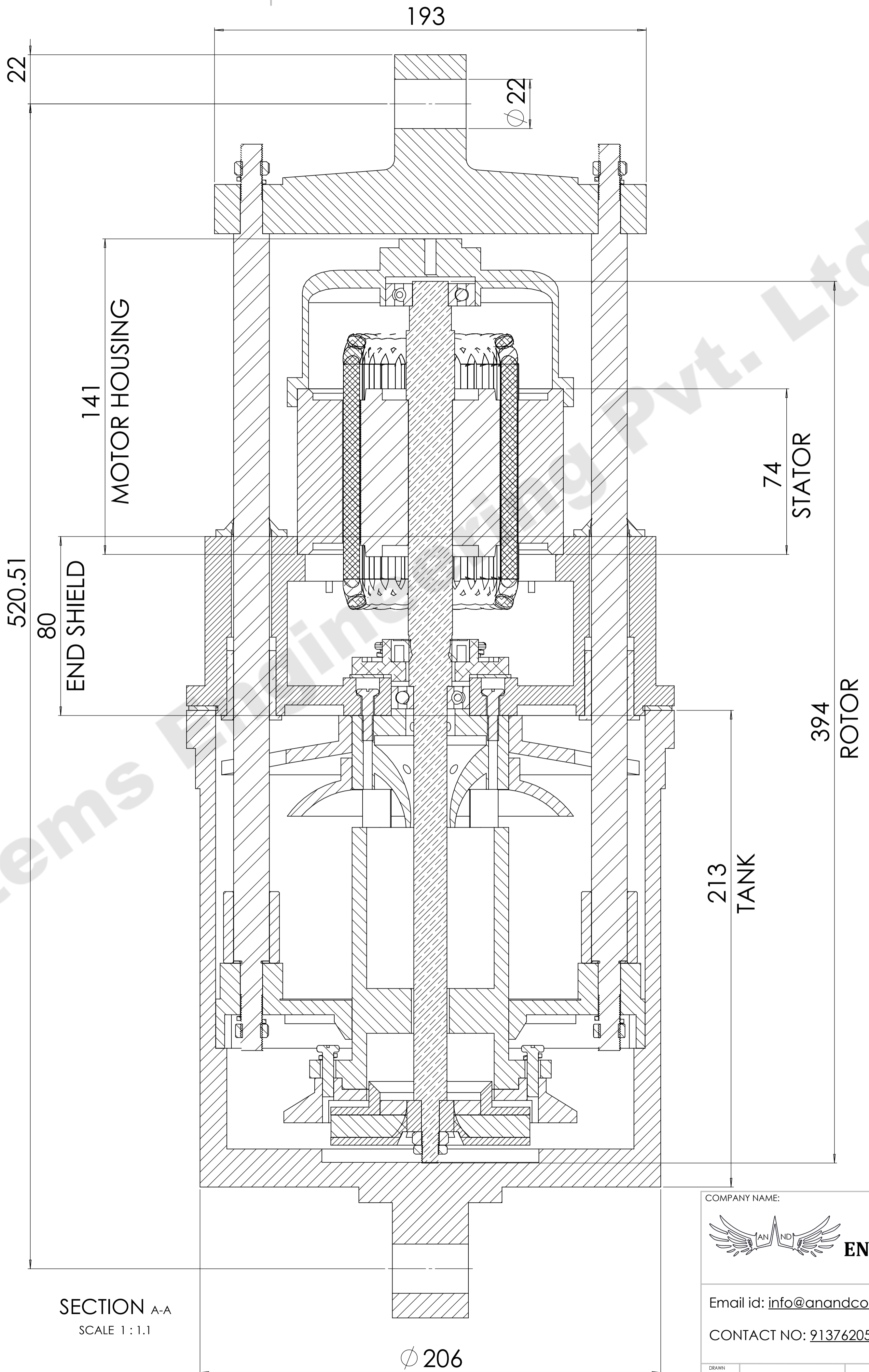
SCALE: 1:5

SHEET 1 OF 2

A1



THRUSTER
 TYPE: AT-870 KG:68 CM:5
 V:415 AMP:0.40 C/S-50 PH3
 S. NO. ANAND SYSTEM
ANAND ENGINEERING PVT. LTD.
 EMAIL: info@anandcontrol.in
 CONTACT: 9137620579



SECTION A-A
SCALE 1:1.1

COMPANY NAME: **ANAND SYSTEM ENGINEERING PVT LTD**
 Email id: info@anandcontrol.in
 CONTACT NO: [9137620579](tel:9137620579)

DO NOT SCALE DRAWING	REVISION
TITLE: 68 KG THRUSTER ASSEMBLY 2D	
DWG NO.	SIGNATURE
DATE	A1
SCALE: 1:1.1	SHEET 2 OF 2

DRAWN	MATERIAL
CHK'D	WEIGHT
APP'VD	
QA	