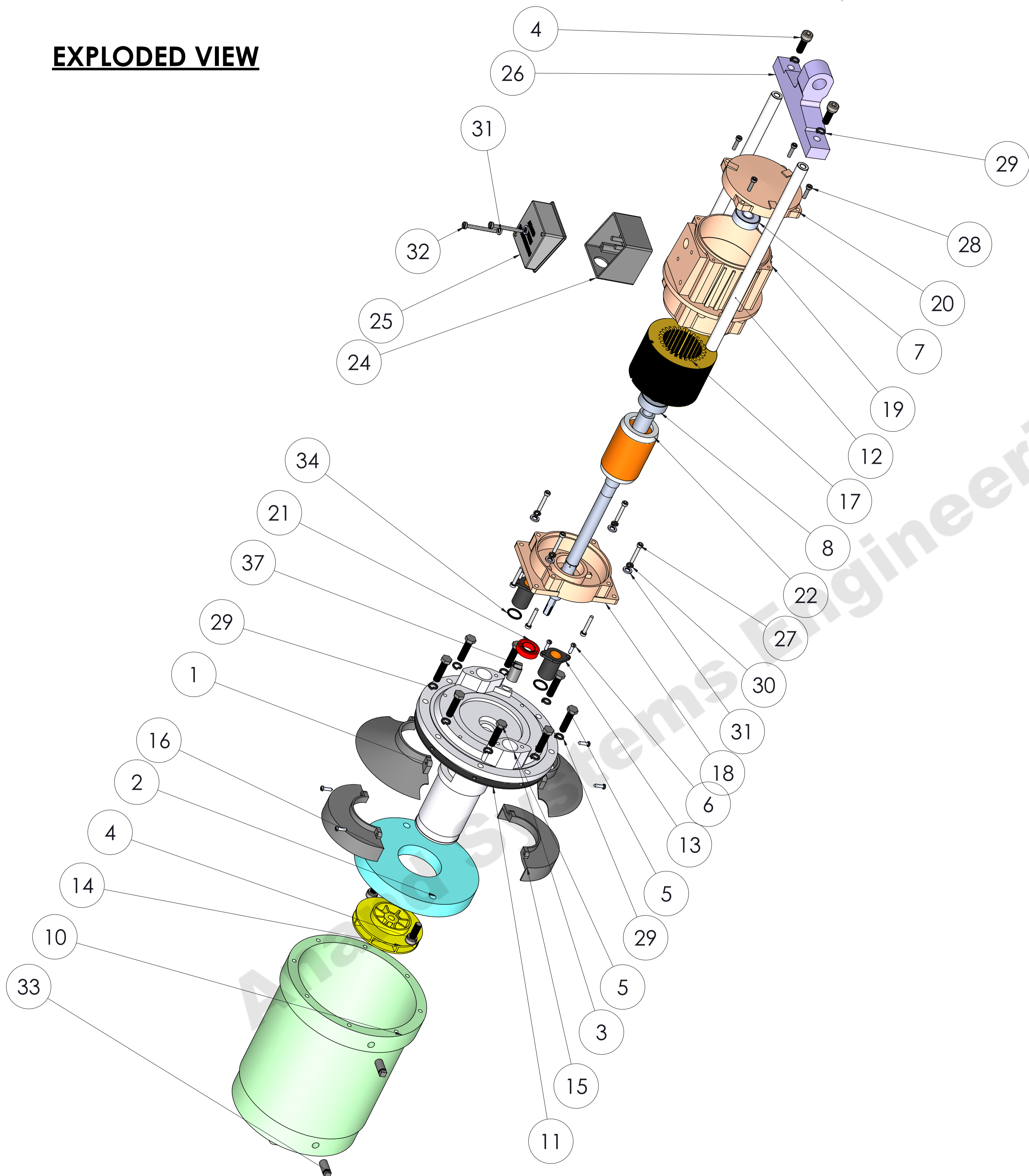


EXPLODED VIEW



ITEM NO.	PART NUMBER	DESCRIPTION	MATERIAL	QTY.
1	BUFFELE	OD-146XID-58, H-32.5	NYLON	1
2	PLUNGER	149X55X20	CAST IRON	1
3	END COVER	OD-175,HOLES ϕ 7X8	ALUMINIUM	1
4	ALENKEY BOLT M8 20X8	M8, 20X8, ROD FIXING	M.S.	4
5	ALENKEY BOLT M8X30	M8, 8X30, END COVER FIXING	M.S.	8
6	BAFFELE COVER SCREW	SELF THREAD SCREW	M.S.	8
7	BEARING 6201	32X12	CARBAN CROME STEEL	1
8	BEARING 6202	32X15	CARBAN CROME STEEL	1
9	GUIDE ROD SEAL ORING	ϕ 14	RUBBER	2
10	BUFFELE	146X58X32.5	NYLON	1
11	C.I.TANK	OD175XID149X.H.-190	CAST IRON	1
12	END COVER GASKET	170X150X1.5, 8 HOLES ϕ 5 PCD-160	RUBBER	1
13	GUIDE ROD	14X290	N8	2
14	GUIDE ROD SEAL	20X14X32	PLASTIC, BRASS	2
15	IMPELLER	OD1-84XOD2-48, L-22	PLASTIC	1
16	IMPELLER END COVER 1ST HALF	110.6X28	PLASTIC	1
	IMPELLER END COVER 2ST HALF	110.6X28	PLASTIC	1
18	MOTOR BOTTOM HOUSING.	OD-95.56X ID-91.4, PCD 101, H-30	ALUMINIUM	1
19	MOTOR HOUSING COVER	122.8X110.5,ID-87.9, OD-91.4	ALUMINIUM	1
20	MOTOR TOP HOUSING	OD-91.5,ID-95.4, H-18.5	ALUMINIUM	1
21	OIL SEAL	27X15X7	RUBBER	1
22	ROTOR	150WATT, OD 47.3, L-330	ALUMINIUM	1
23	TERMINAL BOX	78X78		1
24	TERMINAL BOX COVER			1
25	THRUST BAR.	L-156,H1-17,H2-70, W-24PCD 126,HOLES- ϕ 8.5	CAST IRON	1
26	MOTOR BOTTOM HOUSING COVER BOLT	4X25 ALENKEY BOLT	M.S.	8
27	MOTOR TOP HOUSING COVER BOLT	4X20 ALENKEY BOLT	M.S.	4
28	SPRING WASHER	A8	SPRING STEEL	10
29	SPRING WASHER	A5	SPRING STEEL	4
30	PLAIN WASHER	5.5X11X1.5	M.S.	6
31	SCREW CHZ .	4X40 TERMINAL BOX COVER FIXING	M.S.	2
32	MOTOR	150 WATT, 87X48X60	LAMINATED STEEL	1
33	NEW 34KG OIL PLUG 1-4	9.5X17	M.S.	2
34	LOCK NUT	5/16", ID 7MM	M.S.	1
35	PLAIN WASHER A8.5X16X1	8.5X16X1	M.S.	1
36	OIL PLUG 1-8 .	13X17	M.S.	1

COMPANY NAME: **ANAND SYSTEM ENGINEERING PVT LTD**

TITLE: **NEW 46KG THRUSTER ASSEMBLY 2D**

Email id: info@anandcontrol.in

CONTACT NO: 9137620579

DO NOT SCALE DRAWING

REVISION

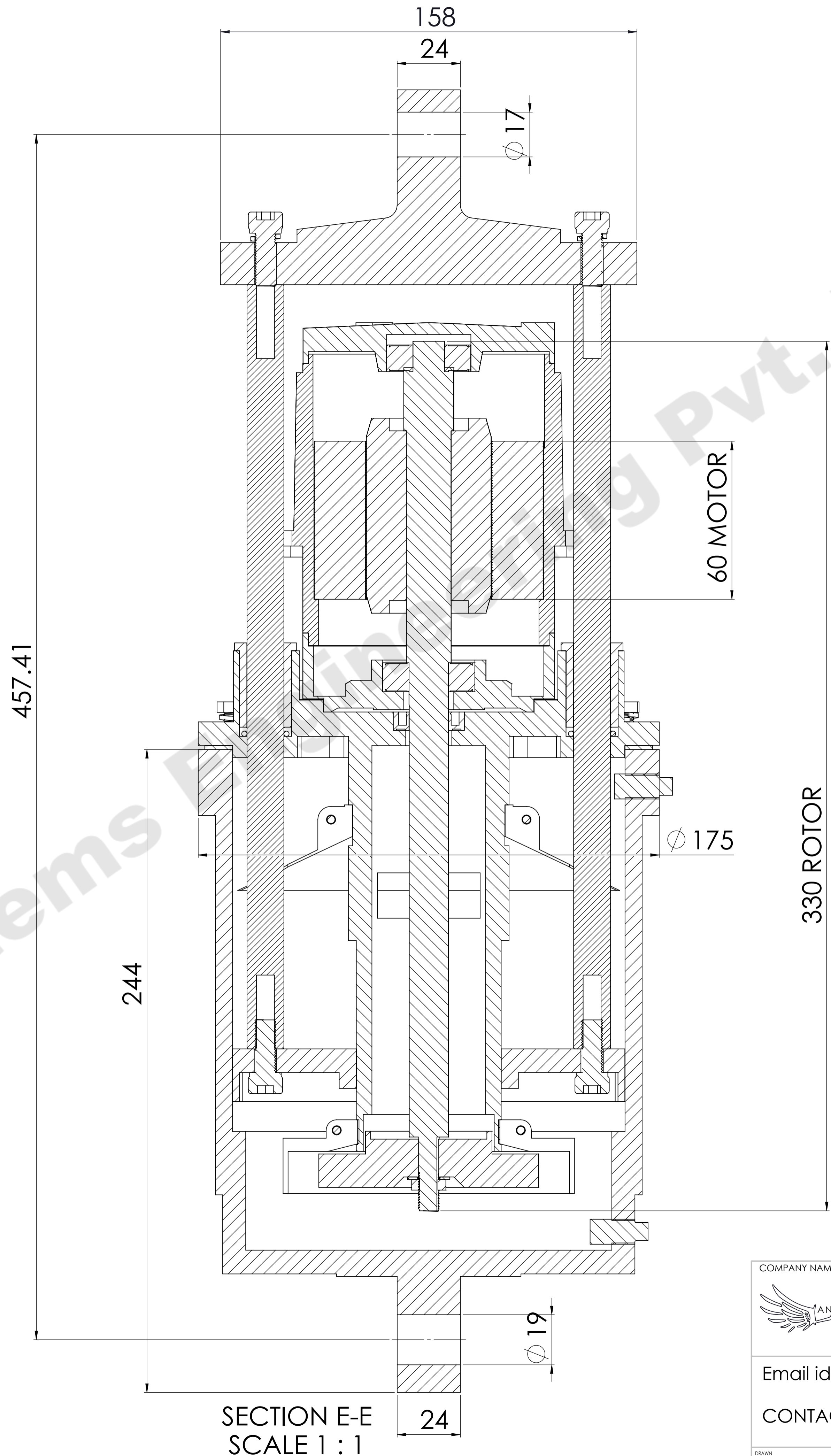
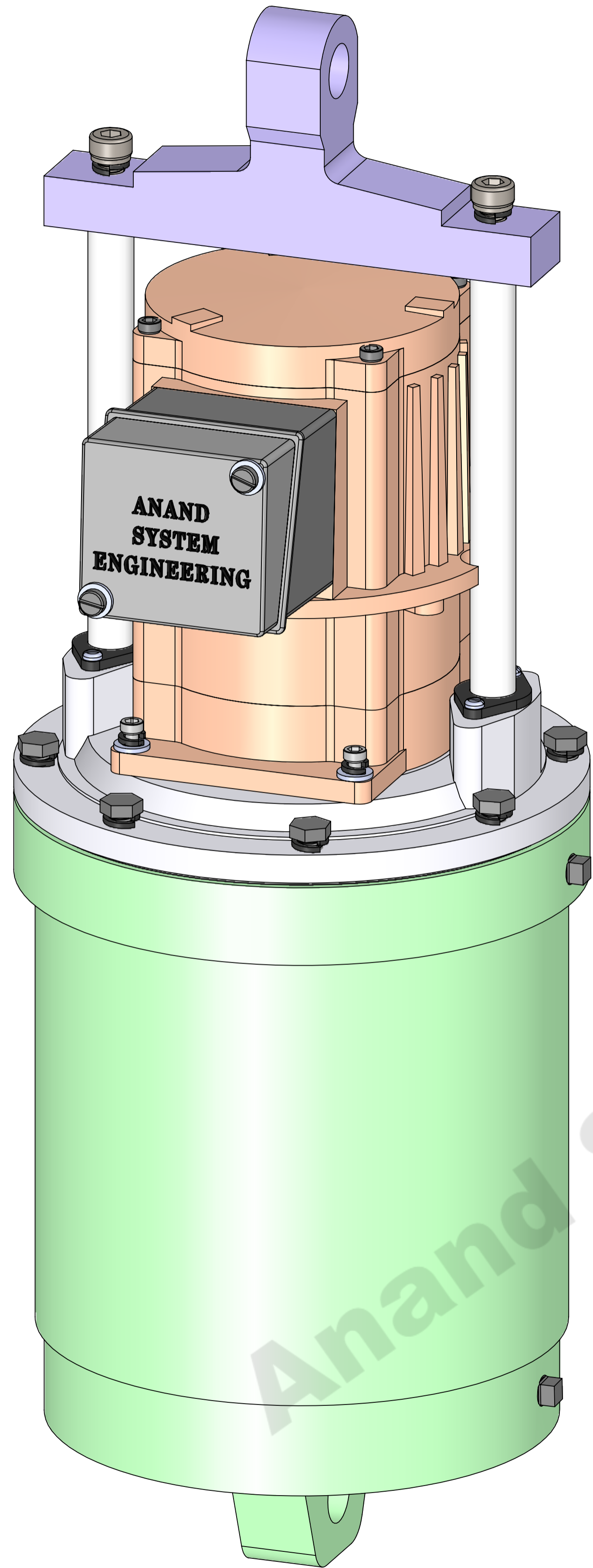
DATE

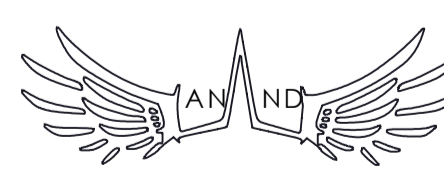
SIGNATURE

SCALE: 1:5

SHEET 1 OF 2

A1



COMPANY NAME:		DO NOT SCALE DRAWING		REVISION
 ANAND SYSTEM ENGINEERING PVT LTD		TITLE:		
		NEW 46KG THRUSTER ASSEMBLY 2D		
Email id: info@anandcontrol.in		DWG NO.		
CONTACT NO: 9137620579		TYPE- AT-535 KG- 46 CM 5		
DATE	SIGNATURE		A1	
DRAWN:		MATERIAL:	USE ONLY BS 148 OIL OR EQUIV.	
CHKD:		WEIGHT:	SCALE:1:5 SHEET 2 OF 2	
APPVD:				
Q.A.				