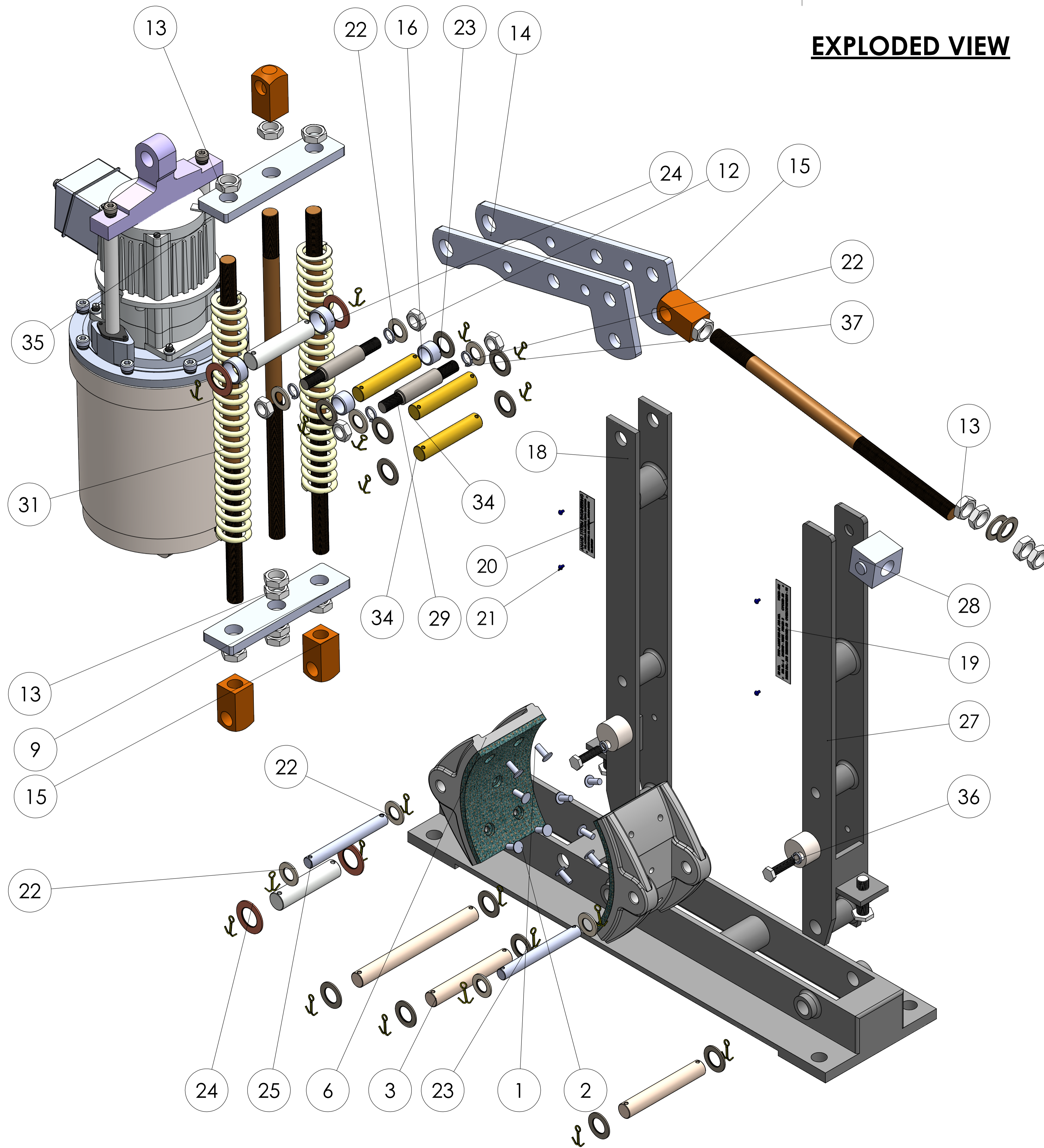


EXPLODED VIEW



ITEM NO.	PART NUMBER	DESCRIPTION	MATERIAL	QTY.
1	AL SHOE RIVET	15X6	M.S.	10
2	BASE	575X50	M.S.	1
3	BASE PIN	16X160	M.S.	2
4	BASE PIN	16X105	M.S.	1
5	BRAKE LINER	6.35X90 MM	ASBESTOS	2
6	BRAKE SHOE	200X90	M.S.	2
7	SPRING	COMPRESS SPRING 6MM COIL, 35X 275X 22 TURNS	SPRING STEEL	2
8	COTTER PIN	1/8" X 1"	M.S.	20
9	GUIDE PLATE	165X40X10	M.S.	2
10	HEX BOLT	M 12, 12X40	M.S.	2
11	HEX BOLT M8	M 8, 8X30	M.S.	2
12	HEX NUT	G.I. M12	M.S.	6
13	HEX NUT	G.I. M16	M.S.	14
14	LEVER	275X6 MM	M.S.	2
15	LUG	M16 TAP, SQ25X25, 50MM LONG	M.S.	4
16	M.S.BUSH FOR LUG	21X16.5X15	M.S.	2
17	M.S.BUSH FOR THRUSTER	25X21X15	M.S.	2
18	MAIN ARM	440X50	M.S.	1
19	NAME PLATE	115X20	ALUMINIUM	1
20	NAME PLATE	70X20	ALUMINIUM	1
21	NAME PLATE RIVET	L-4.5 MM	AB4	4
22	PLAIN WASHER	25X13.5X1.5	M.S.	8
23	PLAIN WASHER	28X16.5X1.5	M.S.	14
24	PLAIN WASHER	37X20.5X1.5	M.S.	4
25	SHOE PIN	12X105	M.S.	2
26	SHOE SUPPORT	30X20	M.S.	2
27	SIDE ARM	490X50	M.S.	1
29	SPACER PIN	O.D16X51, M12 L-100	M.S.	2
30	THRUSTER PIN	19X80	M.S.	2
31	TIE ROD.1	L-330 X 16MM	M.S.	2
32	TIE ROD.2	L-380 X 16MM	M.S.	1
33	TIE ROD.3	L-400 X 16MM	M.S.	1
34	LEVER PIN	16X80	M.S.	3
35	NEW 34KG THRUSTER ASSEMBLY 200-34	-	-	1
36	SPRING WASHER	M8	SPRING STEEL	2
37	SPRING WASHER	M12	SPEING STEEL	4

COMPANY NAME: **ANAND SYSTEM ENGINEERING PVT LTD**

DO NOT SCALE DRAWING

TITLE: **200-34 BRAKE ASSEMBLY 2D**

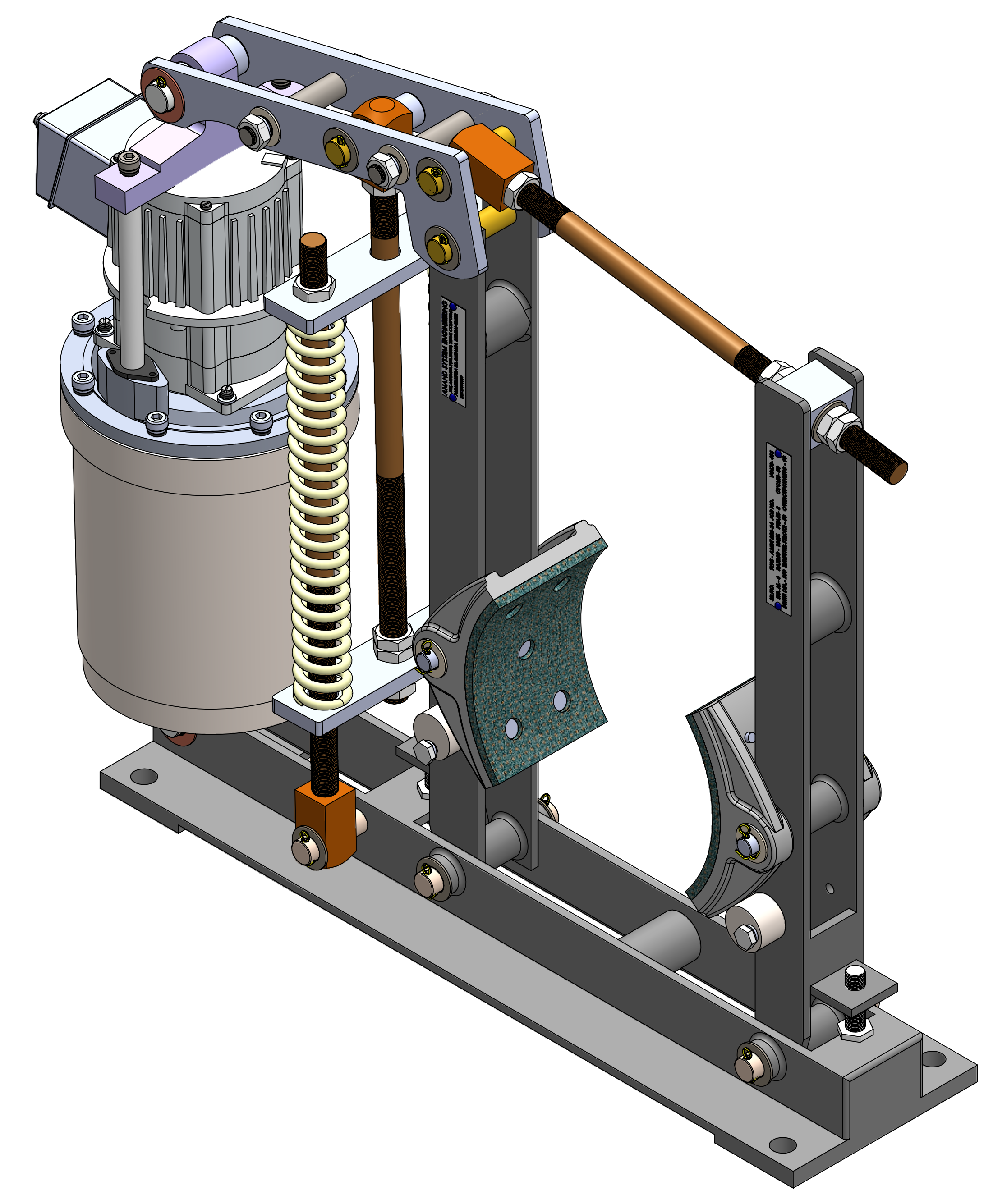
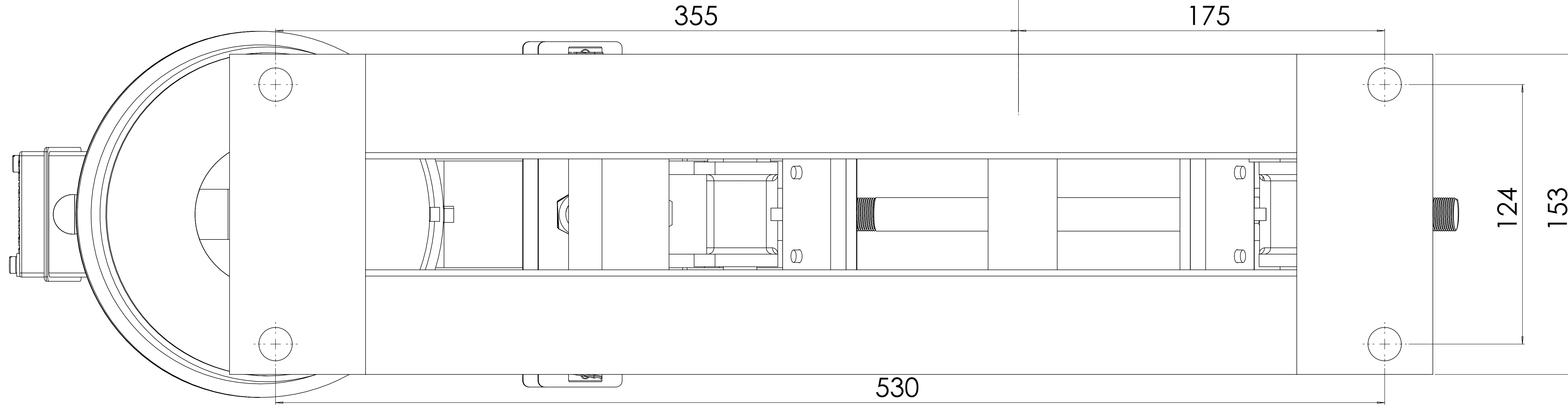
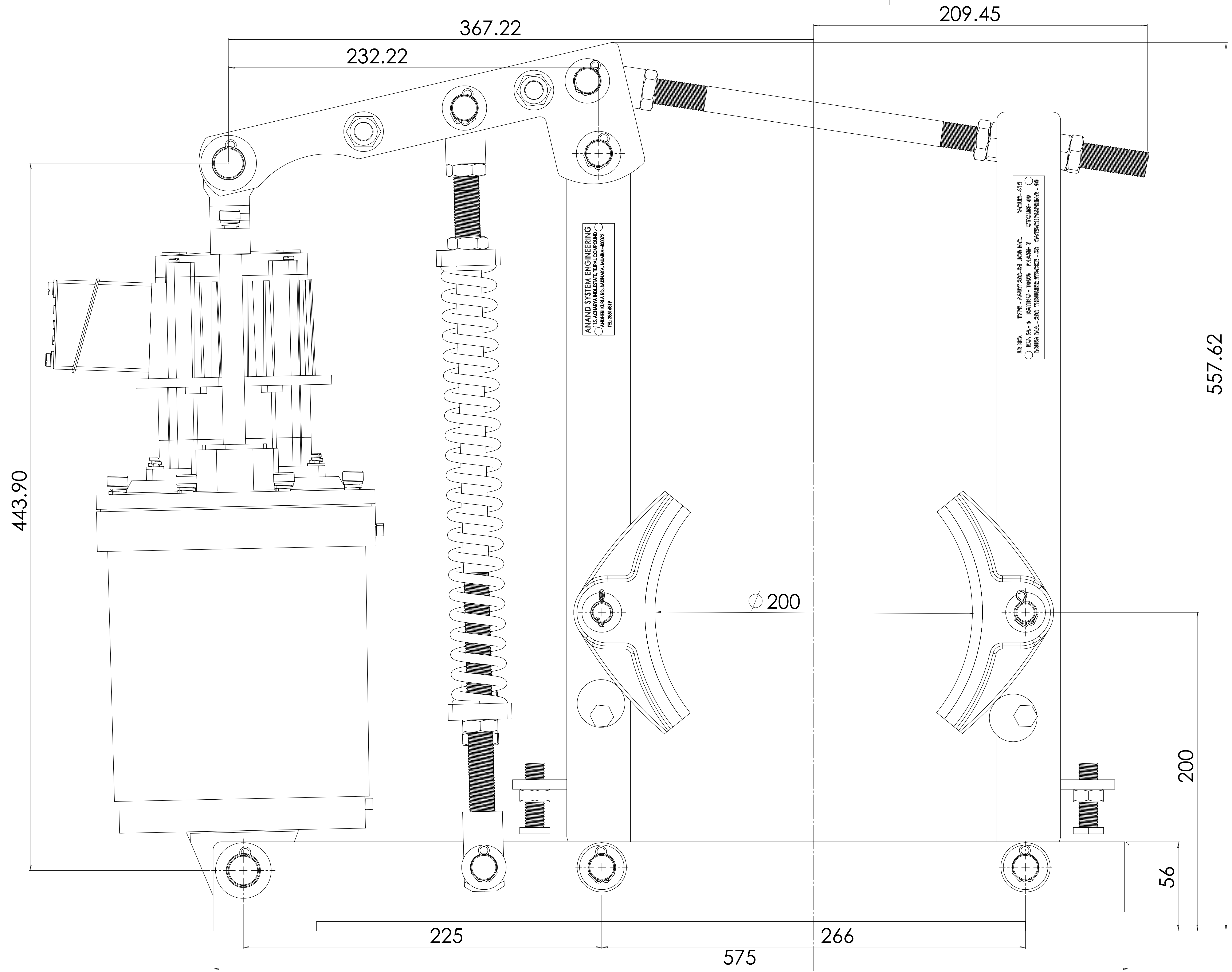
Scale: 1:1

Sheet: 1 of 2

Revision: A1

CONTACT NO: 9137620579

Email id: info@anandcontrol.in



COMPANY NAME		DO NOT SCALE DRAWING	REVISION
 ANAND SYSTEM ENGINEERING PVT LTD		TITLE:	
Email id: info@anandcontrol.in		200-34 BRAKE ASSEMBLY 2D	
CONTACT NO: 9137620579		DWG NO.	DATE
		SCALE	SHEET NO. 2
		A0	