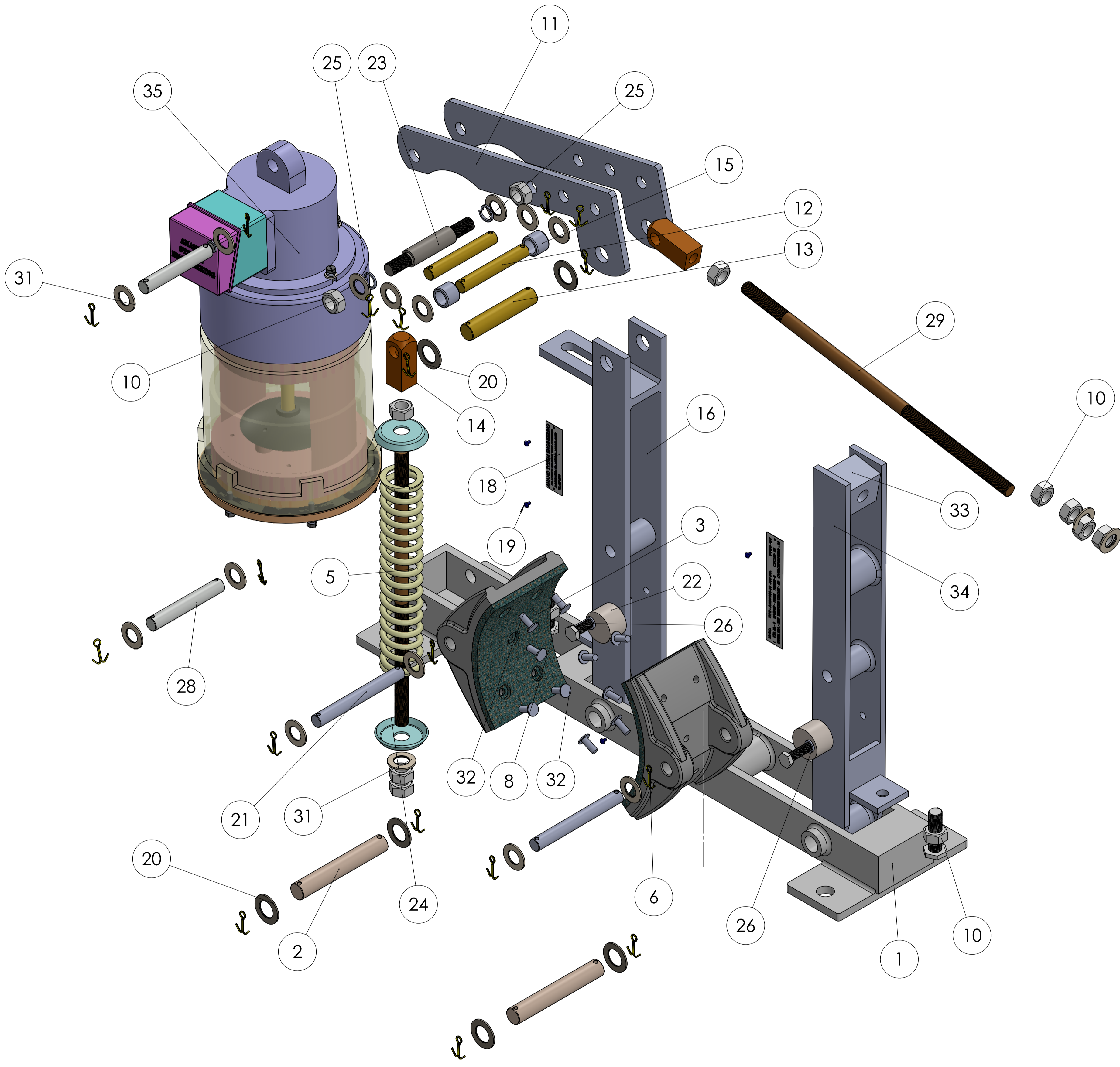


EXPLODED VIEW



ITEM NO.	PART NUMBER	DESCRIPTION	MATERIAL	QTY.
1	BASE	600X68	M.S.	1
2	BASE PIN	16X105	M.S.	2
3	BRAKE LINER	6.35X90MM	ASBESTOS	2
4	BRAKE SHOE	200X90	CAST IRON	2
5	SPRING	COMPRESS SPRING 5.5MM COIL, 38X 200X 15.5 TURNS	SPRING STEEL	1
6	COTTER PIN	1/8" X 1"	M.S.	18
7	COTTER PIN	1/8"X 11/4"	M.S.	4
8	HEX BOLT	M 12, 12X40	M.S	2
9	HEX BOLT M8	M 8, 8X30	M.S.	2
10	HEX NUT	G.I. M12	M.S.	12
11	LEVER		M.S.	2
12	LEVER PIN	12X80	M.S.	2
13	LEVER PIN	16X80	M.S.	1
14	LUG	M12 TAP, SQ19X19, 50MM LONG	M.S.	2
15	M.S.BUSH	19X13.5X15	M.S.	2
16	MAIN ARM.1	600X68	M.S.	1
17	NAME PLATE	115X20	ALUMINIUM	1
18	NAME PLATE	70X20	ALUMINIUM	1
19	NAME PLATE RIVET 200	L-4.5 MM	AB 4	4
20	PLAIN WASHER	28X16.5X1.5	M.S.	6
21	SHOE PIN	12X105	M.S.	2
22	SHOE SUPPORT	30X20	M.S.	2
23	SPACER PIN	O.D16X51, M12 L-100	M.S.	1
24	SPRING CAP	47X14X7.5	M.S.	2
25	SPRING WASHER	M12	SPRING STEEL	2
26	SPRING WASHER	M8	SPRING STEEL	2
27	THRUSTER PIN	12.7X80	M.S.	1
28	THRUSTER PIN	12.7X85	M.S.	1
29	TIE ROD.1	L-330 X 12MM	M.S.	1
30	TIE ROD 2	L-290 X 12MM	M.S.	1
31	PLAIN WASHER	25X13.5X1.5	M.S.	17
32	AL SHOE RIVET 200	15X6	M.S.	10
34	SIDE ARM 200	400X40	M.S.	1
35	18KG THRUSTER ..	18KG THRUSTER ASSEMBLY	-	1

COMPANY NAME



ANAND SYSTEM ENGINEERING PVT LTD

EMAIL ID: info@anandcontrol.in

CONTACT NO: 9137620579

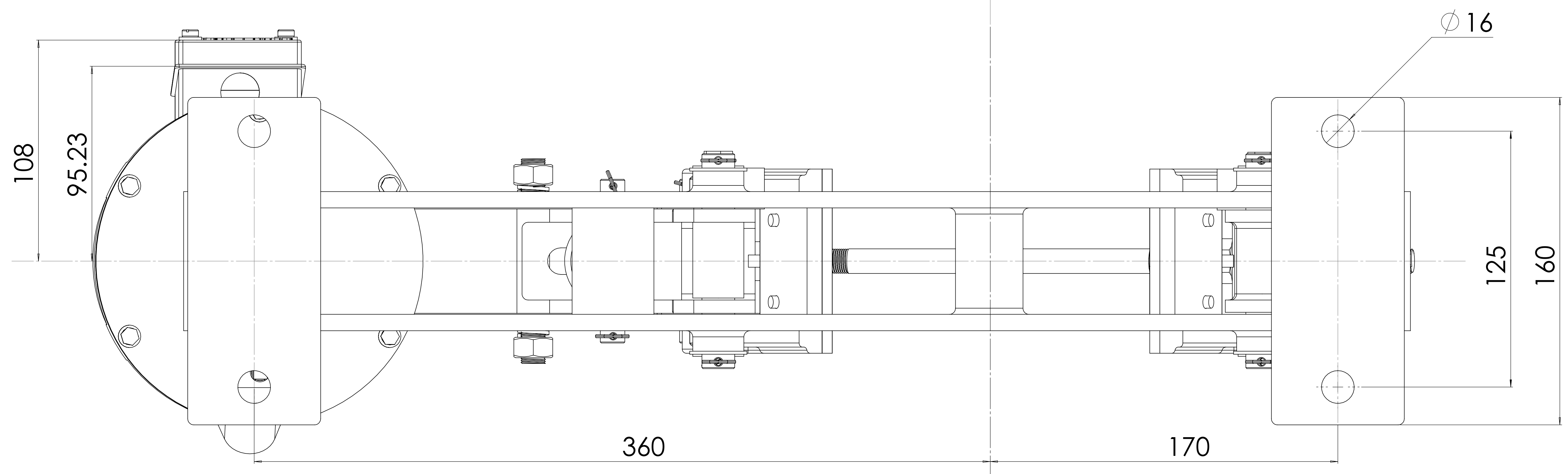
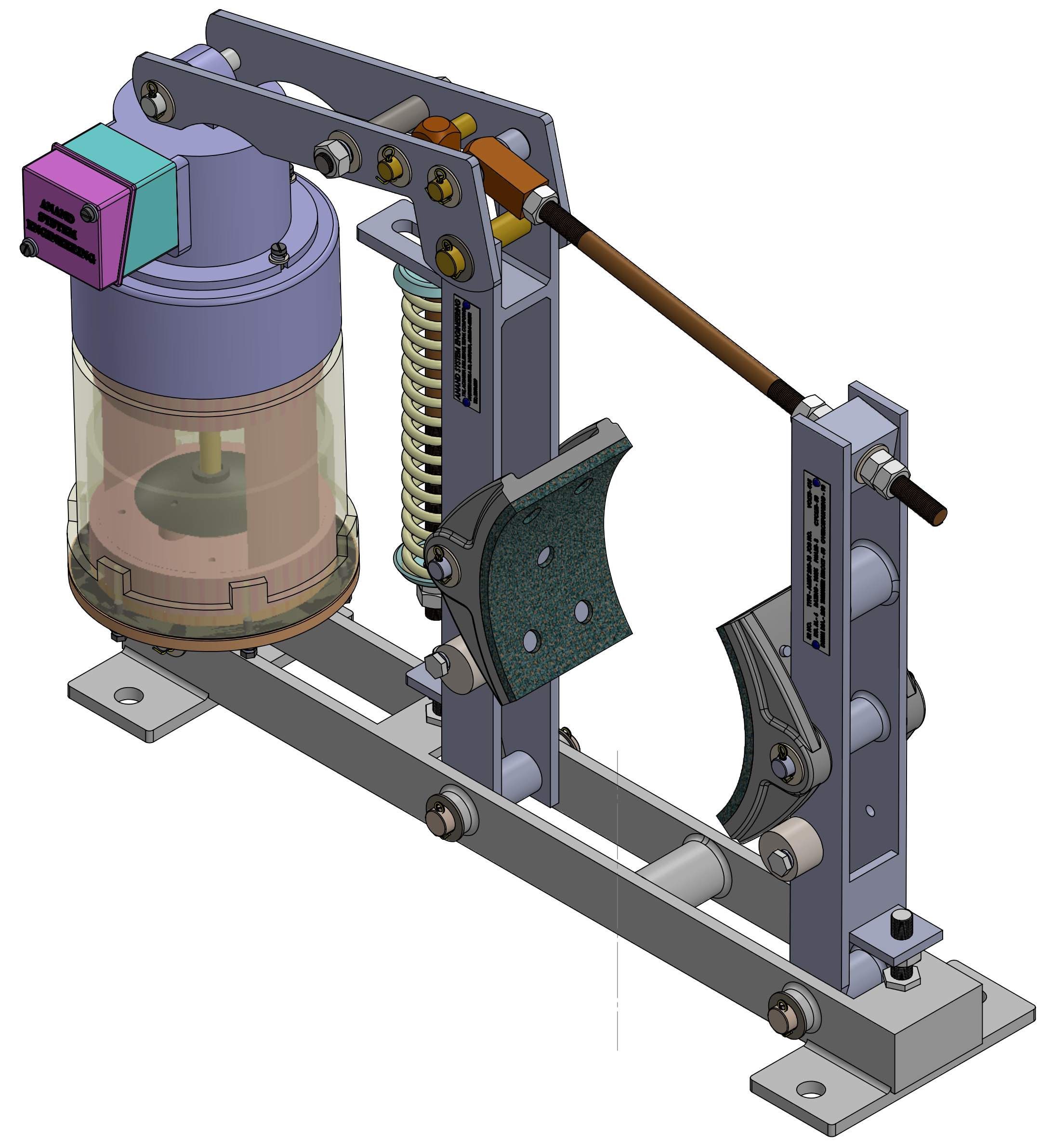
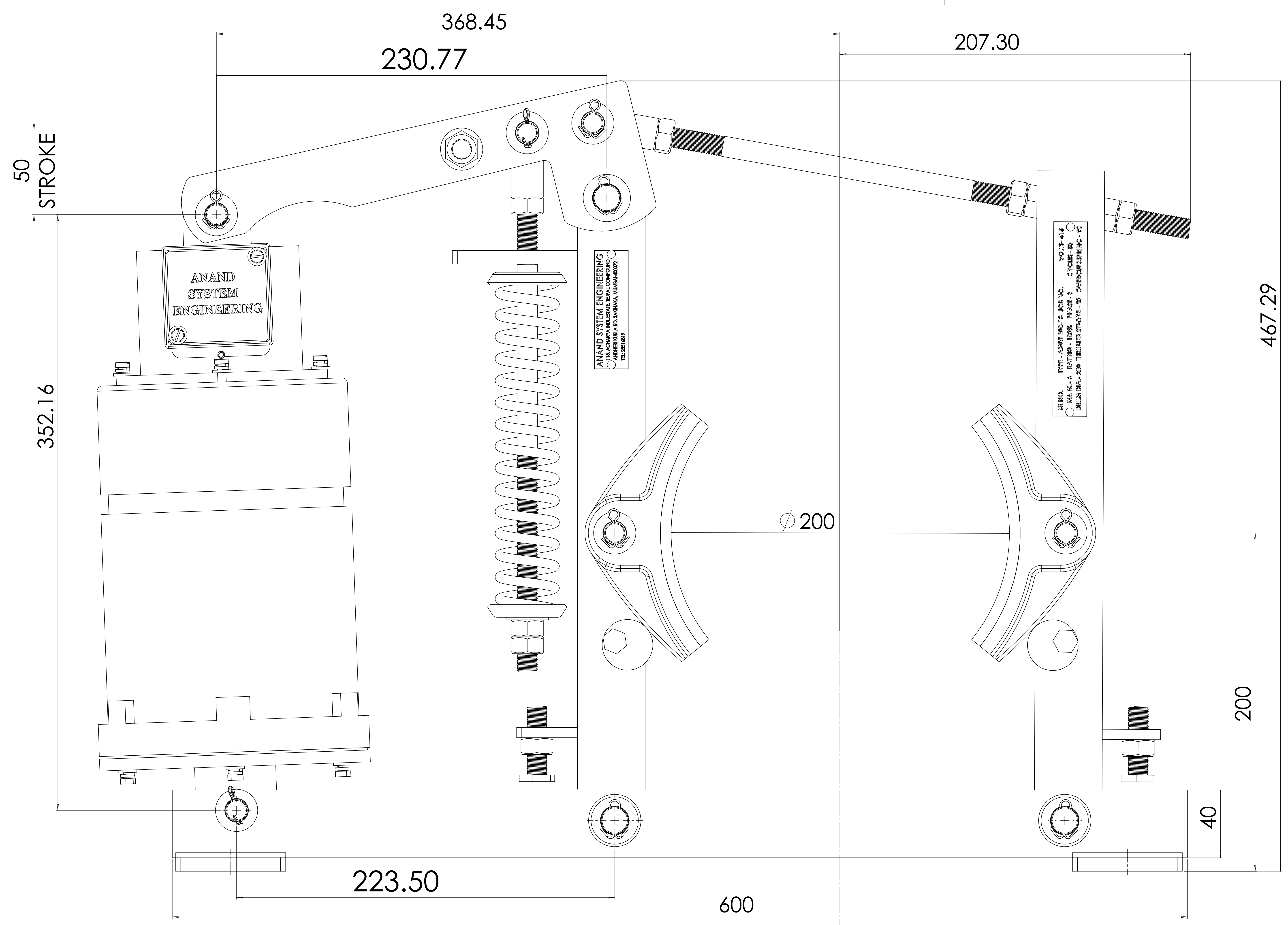
TITLE: **MDT 200-18 KG BRAKE ASSEMBLY**

DWG NO.

SCALE: 1:1

SHEET 1 OF 2

A1



COMPANY NAME:  ANAND SYSTEM ENGINEERING PVT LTD		DO NOT SCALE DRAWING REVISION
Email id: info@anandcontrol.in CONTACT NO: 9137620579		TITLE: 200-18KG BRAKE ASSEMBLY
DWG-NEL A0		SCALE: 1:1 SHEET 2 OF 2