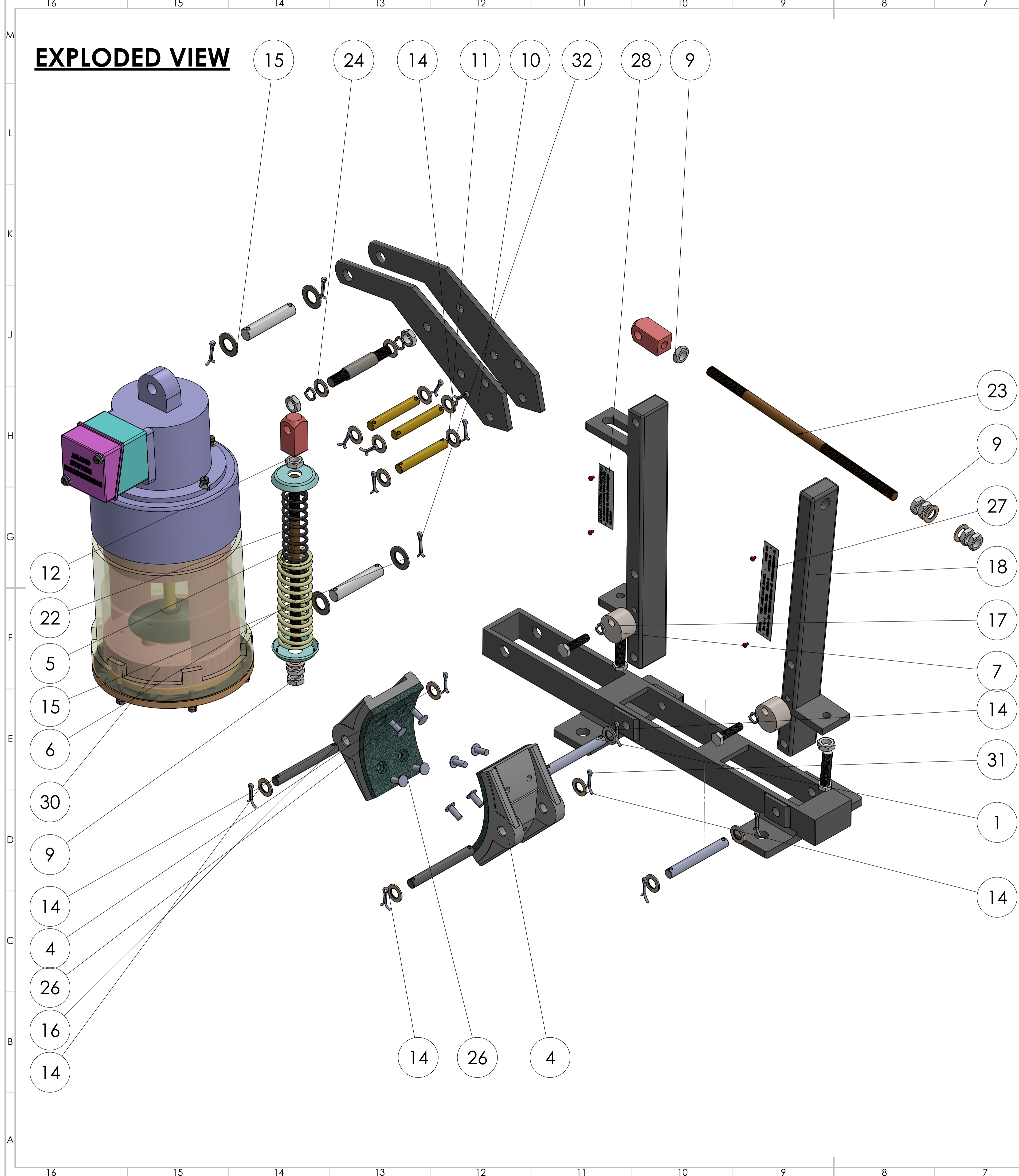
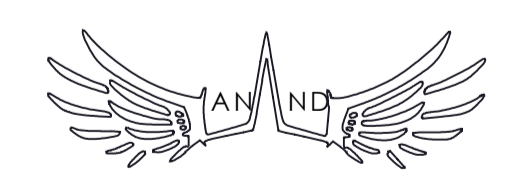


EXPLODED VIEW



ITEM NO.	PART NUMBER	DESCRIPTION	MATERIAL	QTY.
1	BASE PIN	10X80MM	M.S.	2
2	BASE	L-470 X 40	M.S.	1
3	BRAKE LINER	THK-8MM	ASBESTOS	2
4	BRAKE SHOE	150X 70	CAST IRON	2
5	SPRING	COMPRESS SPRING INNER 3MM COIL, 26X100X14 TURNS	SPRING STEEL	1
6	SPRING	COMPRESS SPRING OUTER 3MM COIL, 35X 100X 14 TURNS	SPRING STEEL	1
7	HEX BOLT	M 10, 8X30	M.S.	2
8	HEX BOLT M8	M 8, 10X40	M.S.	2
9	HEX NUT	M10	M.S.	12
10	LEVER	THK-7MM, THRUSTER HOLE 13MM, 3 HOLES DIA 9.8MM, SPACER PIN HOLE-13MM	M.S.	2
11	LEVER PIN	10X65	M.S.	3
12	LUG THREADING	M10 TAP, SQ19X19, HOLE 10MM FREE	M.S.	2
13	MAIN ARM	300X38	M.S.	1
14	PLAIN WASHER	19X10.5X1.5	M.S.	19
15	PLAIN WASHER	25X13.5X1.5	M.S.	4
16	SHOE PIN	10X85	M.S.	2
17	SHOE SUPPORT	30X20	M.S.	2
18	SIDE ARM	325X38	M.S.	1
19	SPACER PIN	13X80, MIDDLE 40MM, M10	M.S.	1
20	SPRING CAP	47X14X7.5	M.S.	2
21	THRUSTER PIN	12.7X70	M.S.	2
22	TIE ROD.1	L-200 X 10MM	M.S.	1
23	TIE ROD.2	L-260 X 10MM	M.S.	1
24	SPRING WASHER	M10	SPRING STEEL	2
25	SPRING WASHER	M8	SPRING STEEL	2
26	AL SHOE RIVET 160	15X6	ALUMINIUM	8
27	NAME PLATE	115X20	ALUMINIUM	1
28	NAME PLATE	70X20	ALUMINIUM	1
29	NAME PLATE RIVET 2	L-4.5 MM	ALUMINIUM	4
30	18KG THRUSTER 160-18	18KG THRUSTER ASSEMBLY	-	1
31	COTTER PIN	1/8"X 3/4"	M.S.	14
32	COTTER PIN	1/8"X 1"	M.S.	4

COMPANY NAME:



**ANAND SYSTEM
ENGINEERING PVT LTD**

Email id: info@anandcontrol.in

CONTACT NO: 9137620579

DO NOT SCALE DRAWING

REVISION

TITLE

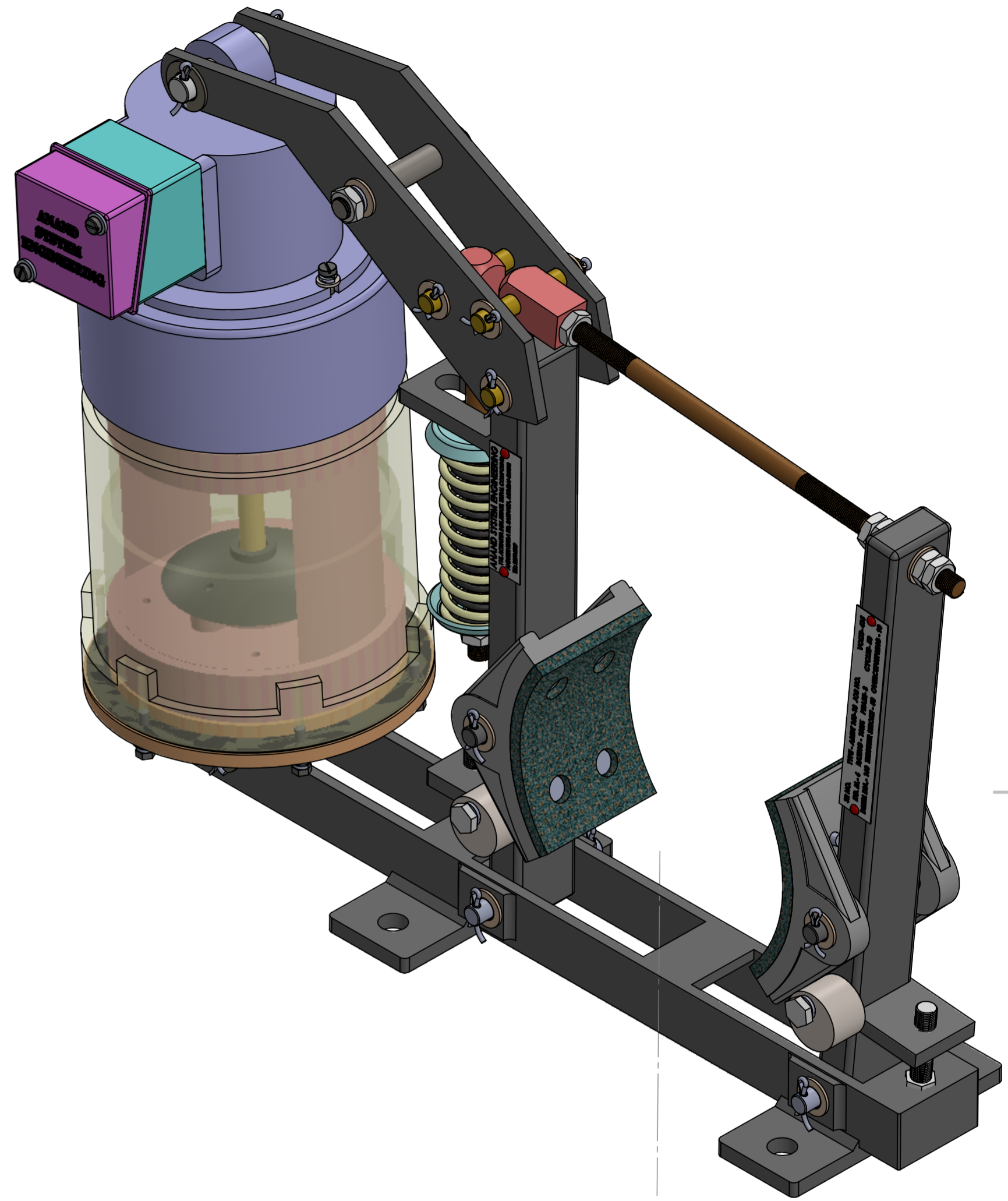
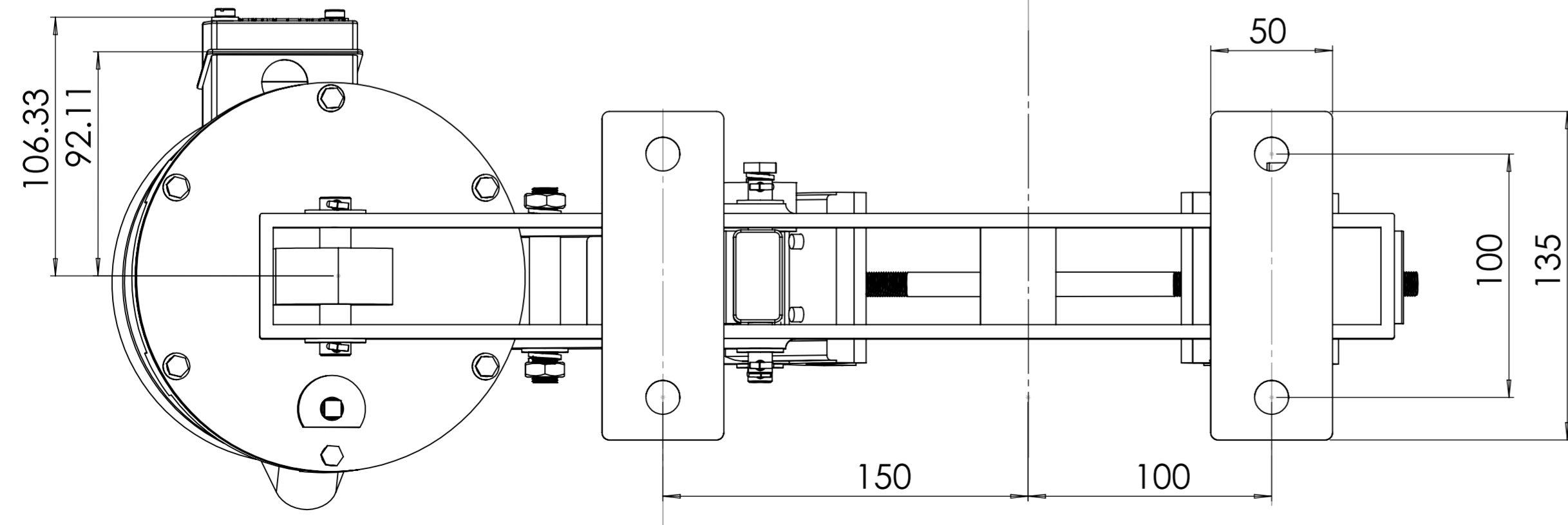
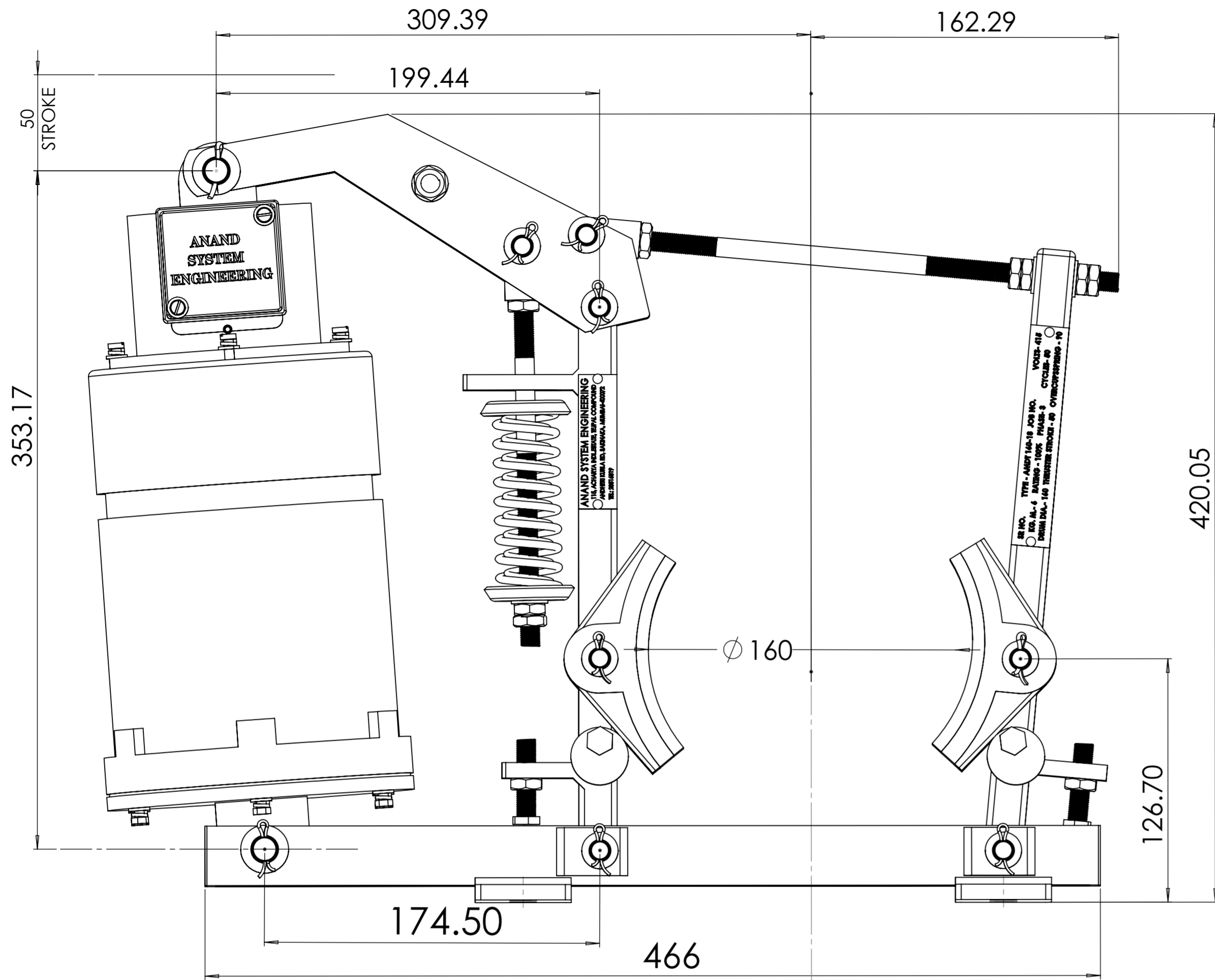
**160-18 KG
BRAKE
ASSEMBLY 2D**

DWG NO.

A1

SCALE:1:5

SHEET 1 OF 2



COMPANY NAME:	 ANAND SYSTEM ENGINEERING PVT LTD	DO NOT SCALE DRAWING	REVISION
Email id: info@anandcontrol.in		TITLE:	160-18 KG BRAKE ASSEMBLY 2D
CONTACT NO: 9137620579		DWG NO.	A2
		SCALE:1:5	SHEET 2 OF 2